

**DESCRIPTION**

<b>Species Reactivity</b>	Human
<b>Specificity</b>	Detects human FATP1 in cell transfectants but not non-transfected parent cells in flow cytometry.
<b>Source</b>	Monoclonal Mouse IgG <sub>2B</sub> Clone # 308420
<b>Purification</b>	Protein A or G purified from hybridoma culture supernatant
<b>Immunogen</b>	NS0 mouse myeloma cell line transfected with human FATP1 Met1-Leu646 Accession # Q6PCB7
<b>Formulation</b>	Lyophilized from a 0.2 µm filtered solution in PBS with Trehalose. See Certificate of Analysis for details. *Small pack size (-SP) is supplied either lyophilized or as a 0.2 µm filtered solution in PBS.

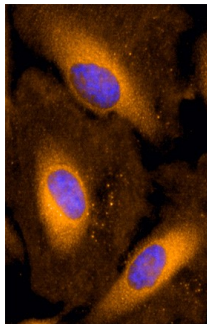
**APPLICATIONS**

Please Note: Optimal dilutions should be determined by each laboratory for each application. General Protocols are available in the Technical Information section on our website.

	<b>Recommended Concentration</b>	<b>Sample</b>
<b>Immunocytochemistry</b>	8-25 µg/mL	See Below
<b>Intracellular Staining by Flow Cytometry</b>	0.25 µg/10 <sup>6</sup> cells	HT-29 human colon adenocarcinoma cell line fixed with paraformaldehyde and permeabilized with saponin
<b>CyTOF-ready</b>	Ready to be labeled using established conjugation methods. No BSA or other carrier proteins that could interfere with conjugation.	

**DATA**

**Immunocytochemistry**



**FATP1 in HeLa Human Cell Line.** FATP1 was detected in immersion fixed HeLa human cervical epithelial carcinoma cell line using Mouse Anti-Human FATP1 Monoclonal Antibody (Catalog # MAB3304) at 10 µg/mL for 3 hours at room temperature. Cells were stained using the NorthernLights™ 557-conjugated Anti-Mouse IgG Secondary Antibody (yellow; Catalog # NL007) and counterstained with DAPI (blue). Specific staining was localized to cytoplasm. View our protocol for Fluorescent ICC Staining of Cells on Coverslips.

**PREPARATION AND STORAGE**

<b>Reconstitution</b>	Reconstitute at 0.5 mg/mL in sterile PBS.
<b>Shipping</b>	The product is shipped at ambient temperature. Upon receipt, store it immediately at the temperature recommended below. *Small pack size (-SP) is shipped with polar packs. Upon receipt, store it immediately at -20 to -70 °C
<b>Stability &amp; Storage</b>	<b>Use a manual defrost freezer and avoid repeated freeze-thaw cycles.</b> <ul style="list-style-type: none"> <li>● 12 months from date of receipt, -20 to -70 °C as supplied.</li> <li>● 1 month, 2 to 8 °C under sterile conditions after reconstitution.</li> <li>● 6 months, -20 to -70 °C under sterile conditions after reconstitution.</li> </ul>

**BACKGROUND**

FATP1 is a plasma membrane protein with 6 transmembrane domains. It is involved in translocation of long-chain fatty acids across the plasma membrane. FATP1 is expressed in muscle, intestine, and adipose tissue.