

DESCRIPTION

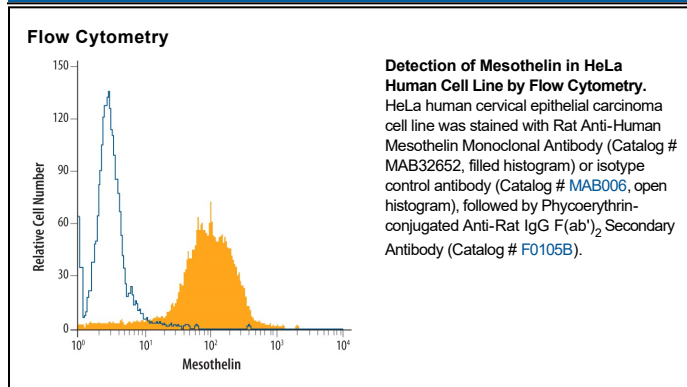
Species Reactivity	Human
Specificity	Detects human Mesothelin in direct ELISAs.
Source	Monoclonal Rat IgG _{2A} Clone # 420411
Purification	Protein A or G purified from hybridoma culture supernatant
Immunogen	Mouse myeloma cell line NS0-derived recombinant human Mesothelin Glu296-Gly580 Accession # AAH09272
Formulation	Lyophilized from a 0.2 µm filtered solution in PBS with Trehalose. See Certificate of Analysis for details. *Small pack size (-SP) is supplied either lyophilized or as a 0.2 µm filtered solution in PBS.

APPLICATIONS

Please Note: Optimal dilutions should be determined by each laboratory for each application. General Protocols are available in the Technical Information section on our website.

	Recommended Concentration	Sample
Flow Cytometry	2.5 µg/10 ⁶ cells	See Below
CyTOF-ready	Ready to be labeled using established conjugation methods. No BSA or other carrier proteins that could interfere with conjugation.	

DATA



PREPARATION AND STORAGE

Reconstitution	Reconstitute at 0.5 mg/mL in sterile PBS.
Shipping	The product is shipped at ambient temperature. Upon receipt, store it immediately at the temperature recommended below. *Small pack size (-SP) is shipped with polar packs. Upon receipt, store it immediately at -20 to -70 °C
Stability & Storage	Use a manual defrost freezer and avoid repeated freeze-thaw cycles. <ul style="list-style-type: none"> ● 12 months from date of receipt, -20 to -70 °C as supplied. ● 1 month, 2 to 8 °C under sterile conditions after reconstitution. ● 6 months, -20 to -70 °C under sterile conditions after reconstitution.

BACKGROUND

Mesothelin is a 40 kDa glycosylphosphatidylinositol-anchored glycoprotein that is expressed on mesothelial cells in the pleura, pericardium and peritoneum and overexpressed in mesotheliomas and ovarian or pancreatic adenocarcinoma. Mesothelin is a product of the CAK-1 gene, which also encodes megakaryocyte-potentiating factor (MPF). Mature human mesothelin shares 60% amino acid identity with either mouse or rat mesothelin. Two variant forms exist; variant 1 has an eight amino acid (1 kDa) insertion and is rarely expressed, while variant 2 is a truncated form secreted in the majority of ovarian cancers but rarely found in normal individuals.