

DESCRIPTION

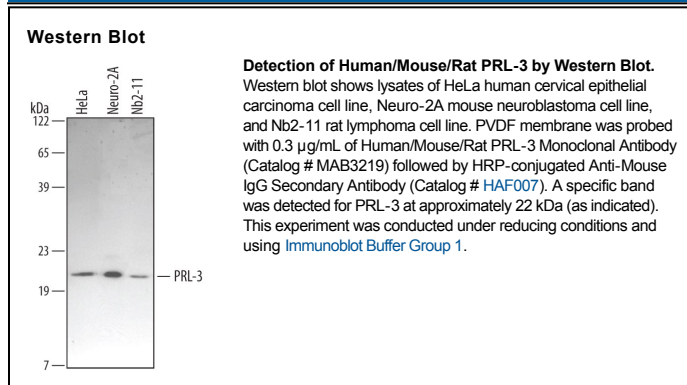
Species Reactivity	Human/Mouse/Rat
Specificity	Detects endogenous human, mouse and rat PRL-3 in Western blots. In Western blots, this antibody does not cross-react with recombinant human PRL-1 or PRL-2.
Source	Monoclonal Mouse IgG _{2B} Clone # 334402
Purification	Protein A or G purified from hybridoma culture supernatant
Immunogen	<i>E. coli</i> -derived recombinant human PRL-3 Ala2-Met173 Accession # O75365
Formulation	Lyophilized from a 0.2 µm filtered solution in PBS with Trehalose. See Certificate of Analysis for details. *Small pack size (-SP) is supplied as a 0.2 µm filtered solution in PBS.

APPLICATIONS

Please Note: Optimal dilutions should be determined by each laboratory for each application. *General Protocols* are available in the *Technical Information* section on our website.

	Recommended Concentration	Sample
Western Blot	0.3 µg/mL	See Below

DATA



PREPARATION AND STORAGE

Reconstitution	Reconstitute at 0.5 mg/mL in sterile PBS.
Shipping	The product is shipped at ambient temperature. Upon receipt, store it immediately at the temperature recommended below. *Small pack size (-SP) is shipped with polar packs. Upon receipt, store it immediately at -20 to -70 °C
Stability & Storage	Use a manual defrost freezer and avoid repeated freeze-thaw cycles. <ul style="list-style-type: none"> ● 12 months from date of receipt, -20 to -70 °C as supplied. ● 1 month, 2 to 8 °C under sterile conditions after reconstitution. ● 6 months, -20 to -70 °C under sterile conditions after reconstitution.

BACKGROUND

Phosphatase of Regenerating Liver-3 (PRL-3), also known as PTP4A3, is an enzyme that removes phosphate modifications from tyrosine residues on proteins. Prenylation at the C-terminal end targets PRL-3 to membrane compartments in the cell, especially to early endosomes and the plasma membrane. Elevated levels of PRL-3 are observed in metastatic colorectal, ovarian, liver and skin cancers. PRL-3 levels may correlate with cell migration rates and tumor invasiveness.