

DESCRIPTION

Species Reactivity	Human/Rat
Specificity	Detects human and rat Lyn.
Source	Monoclonal Mouse IgG _{2B} Clone # 338716
Purification	Protein A or G purified from hybridoma culture supernatant
Immunogen	<i>E. coli</i> -derived recombinant human Lyn Met1-Ile67 Accession # P07948
Formulation	Lyophilized from a 0.2 µm filtered solution in PBS with Trehalose. See Certificate of Analysis for details. *Small pack size (-SP) is supplied either lyophilized or as a 0.2 µm filtered solution in PBS.

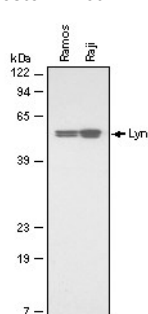
APPLICATIONS

Please Note: Optimal dilutions should be determined by each laboratory for each application. [General Protocols](#) are available in the Technical Information section on our website.

	Recommended Concentration	Sample
Western Blot	0.2 µg/mL	See Below
Immunocytochemistry	8-25 µg/mL	See Below
Simple Western	5 µg/mL	Ramos human Burkitt's lymphoma cell line

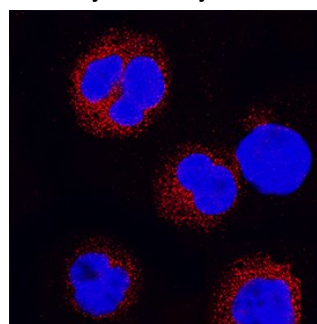
DATA

Western Blot



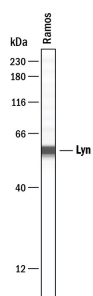
Detection of Human/Rat Lyn by Western Blot. Western blot shows lysates of Ramos human Burkitt's lymphoma cell line and Raji human Burkitt's lymphoma cell line. PVDF membrane was probed with 0.2 µg/mL of Mouse Anti-Human/Rat Lyn Monoclonal Antibody (Catalog # MAB3206) followed by HRP-conjugated Anti-Mouse IgG Secondary Antibody (Catalog # HAF007). A specific band was detected for Lyn at approximately 56 kDa (as indicated). This experiment was conducted under reducing conditions and using [Immunoblot Buffer Group 1](#).

Immunocytochemistry



Lyn in Raji Human Cell Line. Lyn was detected in immersion fixed Raji human Burkitt's lymphoma cell line using Mouse Anti-Human/Rat Lyn Monoclonal Antibody (Catalog # MAB3206) at 25 µg/mL for 3 hours at room temperature. Cells were stained using the NorthernLights™ 557-conjugated Anti-Mouse IgG Secondary Antibody (red; Catalog # NL007) and counterstained with DAPI (blue). Specific staining was localized to cytoplasm. View our protocol for [Fluorescent ICC Staining of Non-adherent Cells](#).

Simple Western



Detection of Human Lyn by Simple Western™. Simple Western lane view shows lysates of Ramos human Burkitt's lymphoma cell line, loaded at 0.2 mg/mL. A specific band was detected for Lyn at approximately 58 kDa (as indicated) using 5 µg/mL of Mouse Anti-Human/Rat Lyn Monoclonal Antibody (Catalog # MAB3206). This experiment was conducted under reducing conditions and using the 12-230 kDa separation system.



PREPARATION AND STORAGE

Reconstitution	Reconstitute at 0.5 mg/mL in sterile PBS.
Shipping	The product is shipped at ambient temperature. Upon receipt, store it immediately at the temperature recommended below. *Small pack size (-SP) is shipped with polar packs. Upon receipt, store it immediately at -20 to -70 °C
Stability & Storage	Use a manual defrost freezer and avoid repeated freeze-thaw cycles. <ul style="list-style-type: none"> 12 months from date of receipt, -20 to -70 °C as supplied. 1 month, 2 to 8 °C under sterile conditions after reconstitution. 6 months, -20 to -70 °C under sterile conditions after reconstitution.

BACKGROUND

The nonreceptor tyrosine kinase Lyn (lck/yes-related novel tyrosine kinase) is widely expressed, and the predominant Src family member present in B cells. Activation of Lyn occurs upon its association with cell surface receptors such as BCR and CD40. Analyses from both loss- and gain-of-function mutant mice have revealed that Lyn is an essential regulator of B cell activation, maturation, and tolerance.