

**DESCRIPTION**

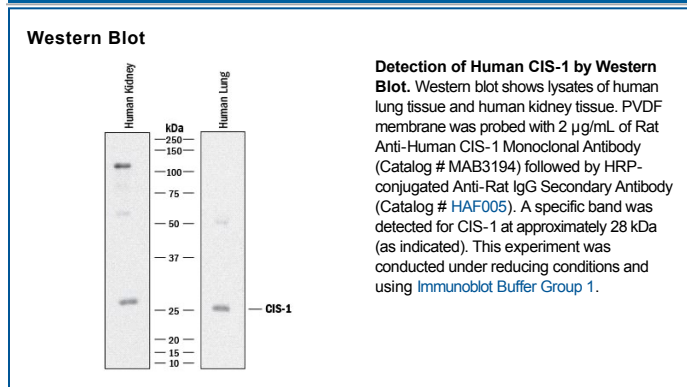
<b>Species Reactivity</b>	Human
<b>Specificity</b>	Detects human CIS-1 in direct ELISAs.
<b>Source</b>	Monoclonal Rat IgG <sub>2A</sub> Clone # 989616
<b>Purification</b>	Protein A or G purified from hybridoma culture supernatant
<b>Immunogen</b>	<i>E. coli</i> -derived recombinant human CIS-1 Leu111-Leu258 Accession # Q9NSE2
<b>Formulation</b>	Lyophilized from a 0.2 µm filtered solution in PBS with Trehalose. See Certificate of Analysis for details. *Small pack size (-SP) is supplied either lyophilized or as a 0.2 µm filtered solution in PBS.

**APPLICATIONS**

**Please Note:** Optimal dilutions should be determined by each laboratory for each application. *General Protocols* are available in the *Technical Information* section on our website.

	<b>Recommended Concentration</b>	<b>Sample</b>
<b>Western Blot</b>	2 µg/mL	See Below

**DATA**



**PREPARATION AND STORAGE**

<b>Reconstitution</b>	Reconstitute at 0.5 mg/mL in sterile PBS.
<b>Shipping</b>	The product is shipped at ambient temperature. Upon receipt, store it immediately at the temperature recommended below. *Small pack size (-SP) is shipped with polar packs. Upon receipt, store it immediately at -20 to -70 °C
<b>Stability &amp; Storage</b>	<b>Use a manual defrost freezer and avoid repeated freeze-thaw cycles.</b> <ul style="list-style-type: none"> <li>● 12 months from date of receipt, -20 to -70 °C as supplied.</li> <li>● 1 month, 2 to 8 °C under sterile conditions after reconstitution.</li> <li>● 6 months, -20 to -70 °C under sterile conditions after reconstitution.</li> </ul>

**BACKGROUND**

Cytokine Inducible SH2-containing protein (CIS-1) is a 29 kDa protein found in a variety of cell types. Mono or polyubiquitination generally results in a 37 or 45 kDa molecule. CIS-1 binds to phosphorylated cytokine receptors IL-3 Rβ and EPO-R and blocks downstream activation of STAT5 via receptor internalization and ubiquitin-mediated proteosomal degradation. Human CIS-1 is a 258 aa peptide that contains one SH2 domain (aa 82-163) and one SOCS box (aa 218-258). There are two known alternatively spliced variants with a 7- or 13-aa substitution for the 7 N-terminal amino acid residues. Over the region used as immunogen, human CIS-1 is 91% identical to the corresponding mouse and canine protein sequences.