

DESCRIPTION

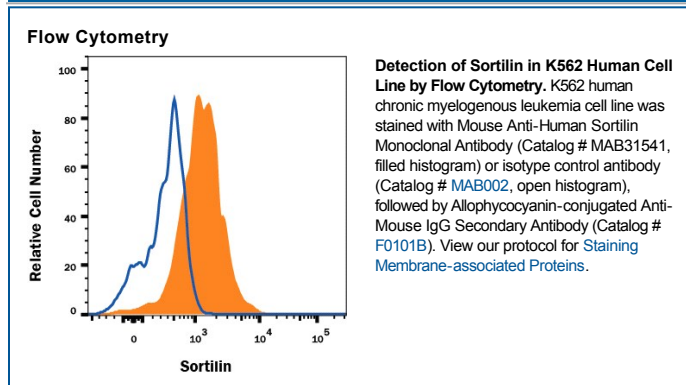
Species Reactivity	Human
Specificity	Detects human Sortilin in direct ELISAs.
Source	Monoclonal Mouse IgG ₁ Clone # 334703
Purification	Protein A or G purified from hybridoma culture supernatant
Immunogen	Mouse myeloma cell line NS0-derived recombinant human Sortilin Ser78-Asn755 Accession # Q99523
Formulation	Lyophilized from a 0.2 µm filtered solution in PBS with Trehalose. See Certificate of Analysis for details. *Small pack size (-SP) is supplied either lyophilized or as a 0.2 µm filtered solution in PBS.

APPLICATIONS

Please Note: Optimal dilutions should be determined by each laboratory for each application. *General Protocols* are available in the *Technical Information* section on our website.

	Recommended Concentration	Sample
Flow Cytometry	0.25 µg/10 ⁶ cells	See Below
CyTOF-ready	Ready to be labeled using established conjugation methods. No BSA or other carrier proteins that could interfere with conjugation.	

DATA



PREPARATION AND STORAGE

Reconstitution	Reconstitute at 0.5 mg/mL in sterile PBS.
Shipping	The product is shipped at ambient temperature. Upon receipt, store it immediately at the temperature recommended below. *Small pack size (-SP) is shipped with polar packs. Upon receipt, store it immediately at -20 to -70 °C
Stability & Storage	Use a manual defrost freezer and avoid repeated freeze-thaw cycles. <ul style="list-style-type: none"> ● 12 months from date of receipt, -20 to -70 °C as supplied. ● 1 month, 2 to 8 °C under sterile conditions after reconstitution. ● 6 months, -20 to -70 °C under sterile conditions after reconstitution.

BACKGROUND

Sortilin, also known as neurotensin receptor 3, is a 100 kDa transmembrane receptor that is localized both in the endosomal compartment and on plasma membranes. It contains an extracellular/luminal Vps10p (vacuolar protein-sorting 10 protein) domain and is one of five known members of the mammalian Vps10p-D receptor family. A Sortilin propeptide, cleaved by a furin, blocks premature ligand binding to uncleaved Sortilin and functions as a chaperone to facilitate trafficking in the Golgi compartments. Sortilin binds multiple ligands and has diverse functions. Mature human Sortilin extracellular domain shares 92% and 91% amino acid sequence identity with that of mouse and rat Sortilin, respectively.