

DESCRIPTION

Species Reactivity	Human
Specificity	Detects human NF-H in direct ELISAs.
Source	Monoclonal Mouse IgG _{2B} Clone # 1002517
Purification	Protein A or G purified from hybridoma culture supernatant
Immunogen	Synthetic peptide containing human NF-H Accession # P12036
Formulation	Lyophilized from a 0.2 µm filtered solution in PBS with Trehalose. See Certificate of Analysis for details. *Small pack size (-SP) is supplied either lyophilized or as a 0.2 µm filtered solution in PBS.

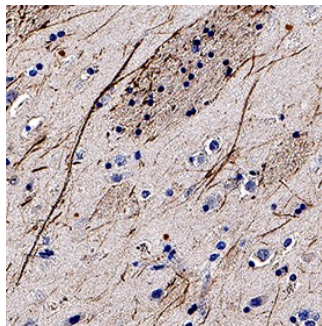
APPLICATIONS

Please Note: Optimal dilutions should be determined by each laboratory for each application. *General Protocols* are available in the *Technical Information* section on our website.

	Recommended Concentration	Sample
Immunohistochemistry	5-25 µg/mL	See Below

DATA

Immunohistochemistry



NF-H in Human Brain. NF-H was detected in immersion fixed paraffin-embedded sections of human brain (caudate nucleus) using Mouse Anti-Human NF-H Monoclonal Antibody (Catalog # MAB31081) at 5 µg/mL for 1 hour at room temperature followed by incubation with the Anti-Mouse IgG VisUCyte™ HRP Polymer Antibody (Catalog # VC001). Before incubation with the primary antibody, tissue was subjected to heat-induced epitope retrieval using Antigen Retrieval Reagent-Basic (Catalog # CTS013). Tissue was stained using DAB (brown) and counterstained with hematoxylin (blue). Specific staining was localized to neurofilaments. View our protocol for IHC Staining with VisUCyte HRP Polymer Detection Reagents.

PREPARATION AND STORAGE

Reconstitution	Reconstitute at 0.5 mg/mL in sterile PBS.
Shipping	The product is shipped at ambient temperature. Upon receipt, store it immediately at the temperature recommended below. *Small pack size (-SP) is shipped with polar packs. Upon receipt, store it immediately at -20 to -70 °C
Stability & Storage	Use a manual defrost freezer and avoid repeated freeze-thaw cycles. <ul style="list-style-type: none"> • 12 months from date of receipt, -20 to -70 °C as supplied. • 1 month, 2 to 8 °C under sterile conditions after reconstitution. • 6 months, -20 to -70 °C under sterile conditions after reconstitution.

BACKGROUND

The human Neurofilament Heavy chain, also known as NF-H and NEFH, is a phosphorylated cytoskeletal intermediate filament protein that is expressed in neurons. Neurofilaments are trimers that always contain the 68 kDa NF-L and variably contain 125 kDa NF-M and 200 kDa NF-H. In the region used for immunization, mouse and rat NF-H are each 93% identical to human NF-H.