

## DESCRIPTION

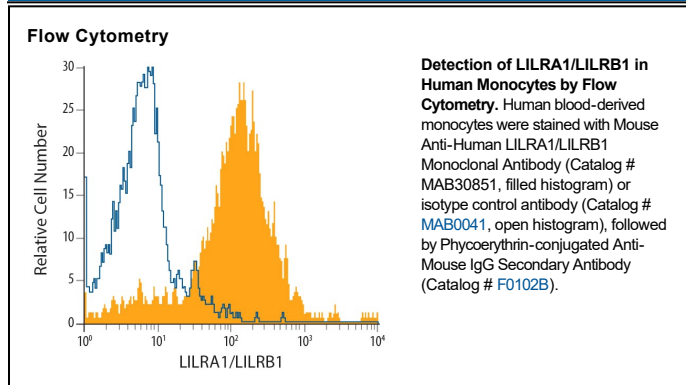
<b>Species Reactivity</b>	Human
<b>Specificity</b>	Detects human LILRA1 in direct ELISAs. In direct ELISAs, 100% cross-reactivity with recombinant human (rh) LILRB1 is observed and no cross-reactivity rhILT3, 4, 5, 6, rhLIR-7 or -8 is observed.
<b>Source</b>	Monoclonal Mouse IgG <sub>2B</sub> Clone # 586326
<b>Purification</b>	Protein A or G purified from hybridoma culture supernatant
<b>Immunogen</b>	Mouse myeloma cell line NS0-derived recombinant human LILRA1 Pro17-Asn461 Accession # O75019
<b>Formulation</b>	Lyophilized from a 0.2 µm filtered solution in PBS with Trehalose. See Certificate of Analysis for details. *Small pack size (-SP) is supplied either lyophilized or as a 0.2 µm filtered solution in PBS.

## APPLICATIONS

**Please Note:** Optimal dilutions should be determined by each laboratory for each application. *General Protocols* are available in the *Technical Information* section on our website.

	<b>Recommended Concentration</b>	<b>Sample</b>
<b>Flow Cytometry</b>	0.25 µg/10 <sup>6</sup> cells	See Below
<b>CyTOF-ready</b>	Ready to be labeled using established conjugation methods. No BSA or other carrier proteins that could interfere with conjugation.	

## DATA



## PREPARATION AND STORAGE

<b>Reconstitution</b>	Reconstitute at 0.5 mg/mL in sterile PBS.
<b>Shipping</b>	The product is shipped at ambient temperature. Upon receipt, store it immediately at the temperature recommended below. *Small pack size (-SP) is shipped with polar packs. Upon receipt, store it immediately at -20 to -70 °C
<b>Stability &amp; Storage</b>	<b>Use a manual defrost freezer and avoid repeated freeze-thaw cycles.</b> <ul style="list-style-type: none"> <li>● 12 months from date of receipt, -20 to -70 °C as supplied.</li> <li>● 1 month, 2 to 8 °C under sterile conditions after reconstitution.</li> <li>● 6 months, -20 to -70 °C under sterile conditions after reconstitution.</li> </ul>

## BACKGROUND

Leukocyte Immunoglobulin-like Receptor 6 (LIR-6), also called LILRA1 or CD85i, is a glycoprotein member of the LIR family of leukocyte Ig-like receptors. As an activating LIR, LIR-6 has a short cytoplasmic tail and a charged aa within the TM domain which interacts with FcRγ. Both four (LIR-6a) and two (LIR-6b) Ig-like domain forms are expressed by monocytes and B cells. Human LIR-6 has no non-primate ortholog, but shows up to 80% aa identity with human ILT-1c and KIR-p91/PIR-B. A mouse homolog, gp49B2, has structural similarity but limited sequence identity.