

DESCRIPTION

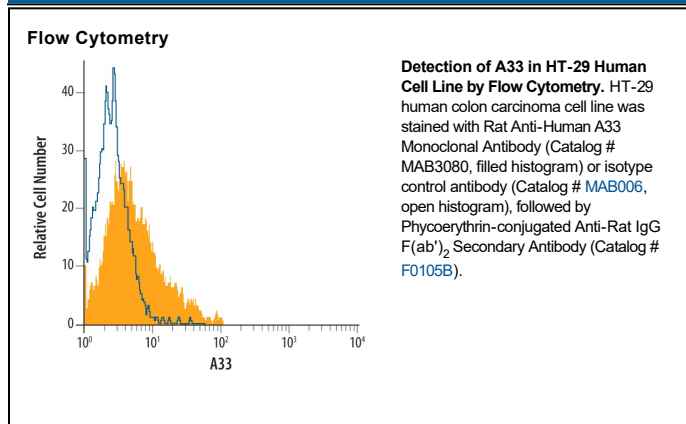
Species Reactivity	Human
Specificity	Detects human A33 in direct ELISAs and Western blots. In direct ELISAs and Western blots, no cross-reactivity with recombinant mouse A33 is observed.
Source	Monoclonal Rat IgG _{2A} Clone # 402104
Purification	Protein A or G purified from hybridoma culture supernatant
Immunogen	Mouse myeloma cell line NS0-derived recombinant human A33 Ile22-Val235 Accession # Q99795
Formulation	Lyophilized from a 0.2 µm filtered solution in PBS with Trehalose. See Certificate of Analysis for details. *Small pack size (-SP) is supplied either lyophilized or as a 0.2 µm filtered solution in PBS.

APPLICATIONS

Please Note: Optimal dilutions should be determined by each laboratory for each application. *General Protocols* are available in the *Technical Information* section on our website.

	Recommended Concentration	Sample
Western Blot	1 µg/mL	Recombinant Human A33
Flow Cytometry	2.5 µg/10 ⁶ cells	See Below
Immunohistochemistry	8-25 µg/mL	Immersion fixed paraffin-embedded sections of human colon and human colon cancer tissue subjected to Antigen Retrieval Reagent-Basic (Catalog # CTS013)
CyTOF-ready	Ready to be labeled using established conjugation methods. No BSA or other carrier proteins that could interfere with conjugation.	

DATA



PREPARATION AND STORAGE

Reconstitution	Reconstitute at 0.5 mg/mL in sterile PBS.
Shipping	The product is shipped at ambient temperature. Upon receipt, store it immediately at the temperature recommended below. *Small pack size (-SP) is shipped with polar packs. Upon receipt, store it immediately at -20 to -70 °C
Stability & Storage	Use a manual defrost freezer and avoid repeated freeze-thaw cycles. <ul style="list-style-type: none"> ● 12 months from date of receipt, -20 to -70 °C as supplied. ● 1 month, 2 to 8 °C under sterile conditions after reconstitution. ● 6 months, -20 to -70 °C under sterile conditions after reconstitution.

BACKGROUND

Human A33, also known as GPA33, is a 43 kDa type I transmembrane glycoprotein that belongs to the CTX (cortical thymocyte marker in *Xenopus*) family of cell adhesion molecules within the immunoglobulin superfamily. Other family members include CXADR, ESAM, BT-IgSF, CD2 and JAM-A-C. The extracellular domain (ECD) of human A33 is 214 amino acids (aa) in length and contains one V-type and one C2-type Ig-like domain. This ECD is 80%, 74% and 71% aa identical to canine, bovine and mouse A33 ECD, respectively. A33 is likely to be involved in cell-cell adhesion between epithelial cells.