

DESCRIPTION

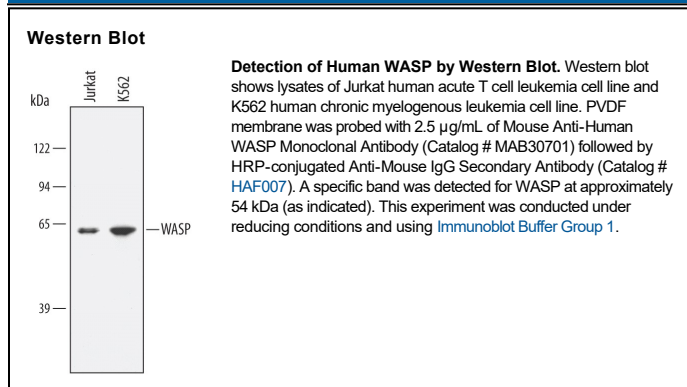
Species Reactivity	Human
Specificity	Detects human WASP in direct ELISAs and Western blots.
Source	Monoclonal Mouse IgG ₁ Clone # 336918
Purification	Protein A or G purified from hybridoma culture supernatant
Immunogen	<i>E. coli</i> -derived recombinant human WASP Lys230-Gln310 (predicted) Accession # P42768
Formulation	Lyophilized from a 0.2 µm filtered solution in PBS with Trehalose. See Certificate of Analysis for details. *Small pack size (-SP) is supplied either lyophilized or as a 0.2 µm filtered solution in PBS.

APPLICATIONS

Please Note: Optimal dilutions should be determined by each laboratory for each application. *General Protocols* are available in the *Technical Information* section on our website.

	Recommended Concentration	Sample
Western Blot	2.5 µg/mL	See Below

DATA



PREPARATION AND STORAGE

Reconstitution	Reconstitute at 0.5 mg/mL in sterile PBS.
Shipping	The product is shipped at ambient temperature. Upon receipt, store it immediately at the temperature recommended below. *Small pack size (-SP) is shipped with polar packs. Upon receipt, store it immediately at -20 to -70 °C
Stability & Storage	Use a manual defrost freezer and avoid repeated freeze-thaw cycles. <ul style="list-style-type: none"> ● 12 months from date of receipt, -20 to -70 °C as supplied. ● 1 month, 2 to 8 °C under sterile conditions after reconstitution. ● 6 months, -20 to -70 °C under sterile conditions after reconstitution.

BACKGROUND

WASP (Wiskott-Aldrich Syndrome Protein) is a 54 kDa protein belonging to the WASP/SCAR/WAVE family of proteins involved in actin polymerization. It is a highly conserved protein and is expressed selectively in hematopoietic stem cell-derived lineages. WASP contains multiple domains with unique functions. Mutations in WASP are associated with diseases of the hematopoietic/ immunologic system.