

DESCRIPTION

| | |
|---------------------------|---|
| Species Reactivity | Human |
| Specificity | Detects human WASP in direct ELISAs and Western blots. |
| Source | Monoclonal Mouse IgG ₁ Clone # 336925 |
| Purification | Protein A or G purified from hybridoma culture supernatant |
| Immunogen | <i>E. coli</i> -derived recombinant human WASP Lys230-Gln310 Accession # P42768 |
| Formulation | Lyophilized from a 0.2 µm filtered solution in PBS with Trehalose. See Certificate of Analysis for details. *Small pack size (-SP) is supplied either lyophilized or as a 0.2 µm filtered solution in PBS. |

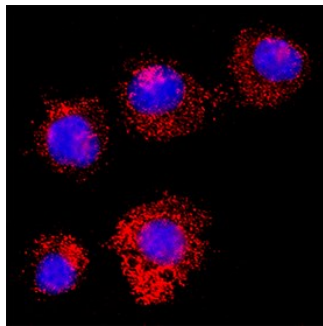
APPLICATIONS

Please Note: Optimal dilutions should be determined by each laboratory for each application. General Protocols are available in the Technical Information section on our website.

| | Recommended Concentration | Sample |
|----------------------------|----------------------------------|---|
| Western Blot | 1 µg/mL | Recombinant Human WASP |
| Immunocytochemistry | 8-25 µg/mL | Immersion fixed U937 human histiocytic lymphoma cell line |

DATA

Immunocytochemistry



WASP in U937 Human Cell Line. WASP was detected in immersion fixed U937 human histiocytic lymphoma cell line using Mouse Anti-Human WASP Monoclonal Antibody (Catalog # MAB3070) at 8 µg/mL for 3 hours at room temperature. Cells were stained using the NorthernLights™ 557-conjugated Anti-Mouse IgG Secondary Antibody (red; Catalog # NL007) and counterstained with DAPI (blue). Specific staining was localized to cytoplasm. Staining was performed using our protocol for Fluorescent ICC Staining of Non-adherent Cells.

PREPARATION AND STORAGE

| | |
|--------------------------------|--|
| Reconstitution | Reconstitute at 0.5 mg/mL in sterile PBS. |
| Shipping | The product is shipped at ambient temperature. Upon receipt, store it immediately at the temperature recommended below. *Small pack size (-SP) is shipped with polar packs. Upon receipt, store it immediately at -20 to -70 °C |
| Stability & Storage | Use a manual defrost freezer and avoid repeated freeze-thaw cycles. <ul style="list-style-type: none"> • 12 months from date of receipt, -20 to -70 °C as supplied. • 1 month, 2 to 8 °C under sterile conditions after reconstitution. • 6 months, -20 to -70 °C under sterile conditions after reconstitution. |

BACKGROUND

WASP is a 54kDa protein belonging to the WASP/SCAR/WAVE family of proteins involved in actin polymerization. It is a highly conserved protein and is expressed selectively in hematopoietic stem cell-derived lineages. WASP contains multiple domains with unique functions. Mutations in WASP are associated with diseases of the hematopoietic/immunologic system.