

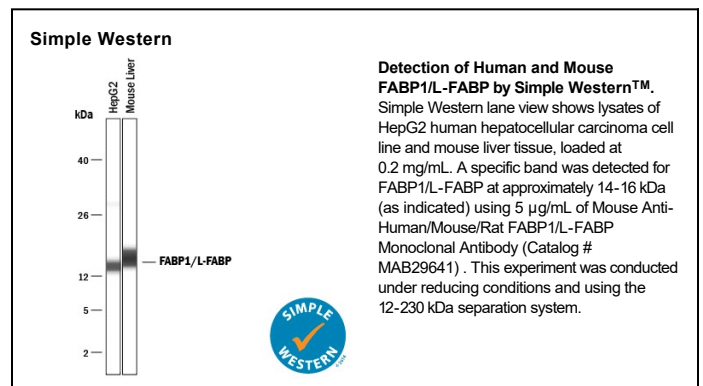
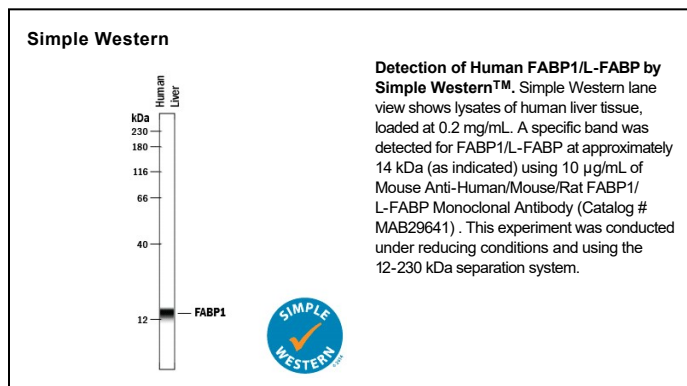
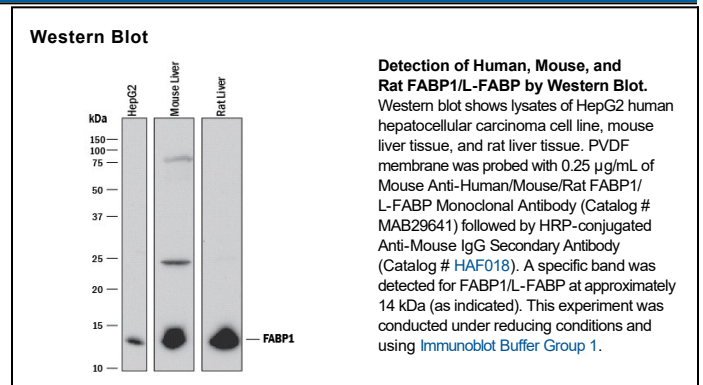
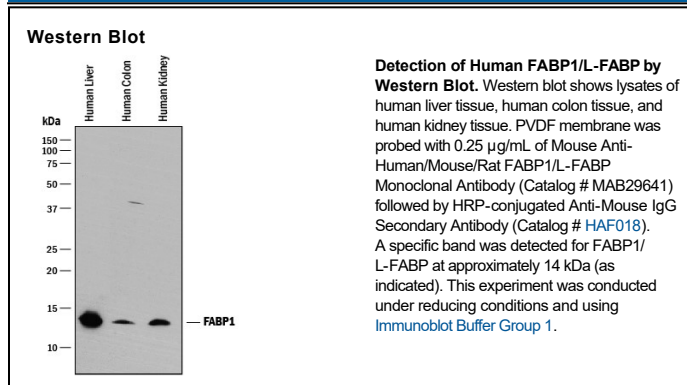
DESCRIPTION	
Species Reactivity	Human/Mouse/Rat
Specificity	Detects human FABP1/L-FABP in direct ELISAs and Western blots. In direct ELISAs and Western blots, no cross-reactivity with rhFABP2, -3, -4, -5, -6, -7, or rmFABP9 is observed.
Source	Monoclonal Mouse IgG ₁ Clone # 328605
Purification	Protein A or G purified from hybridoma culture supernatant
Immunogen	<i>E. coli</i> -derived recombinant human FABP1/L-FABP Met1-Ile127 Accession # P07148
Formulation	Lyophilized from a 0.2 µm filtered solution in PBS with Trehalose. See Certificate of Analysis for details. *Small pack size (-SP) is supplied either lyophilized or as a 0.2 µm filtered solution in PBS.

APPLICATIONS

Please Note: Optimal dilutions should be determined by each laboratory for each application. *General Protocols* are available in the *Technical Information* section on our website.

	Recommended Concentration	Sample
Western Blot	0.25 µg/mL	See Below
Simple Western	5-10 µg/mL	See Below

DATA



PREPARATION AND STORAGE

Reconstitution	Reconstitute at 0.5 mg/mL in sterile PBS.
Shipping	The product is shipped at ambient temperature. Upon receipt, store it immediately at the temperature recommended below. *Small pack size (-SP) is shipped with polar packs. Upon receipt, store it immediately at -20 to -70 °C
Stability & Storage	Use a manual defrost freezer and avoid repeated freeze-thaw cycles. <ul style="list-style-type: none"> • 12 months from date of receipt, -20 to -70 °C as supplied. • 1 month, 2 to 8 °C under sterile conditions after reconstitution. • 6 months, -20 to -70 °C under sterile conditions after reconstitution.

BACKGROUND

FABP1, also known as liver FABP (L-FABP), Z-protein and squalene-and sterol-carrier protein (SCP) is a member of the intracellular FABP family. It is highly expressed in the liver, intestine, kidney and lung. FABP1 binds free fatty acids and their co-enzyme A derivatives and may be involved in intracellular lipid transport.

