

DESCRIPTION

| | |
|---------------------------|---|
| Species Reactivity | Canine |
| Specificity | Detects canine IL-18/IL-1F4 in direct ELISAs and Western blots. |
| Source | Monoclonal Mouse IgG ₁ Clone # 314811 |
| Purification | Protein A or G purified from hybridoma culture supernatant |
| Immunogen | <i>E. coli</i> -derived recombinant canine IL-18/IL-1F4 Tyr37-Ser193 Accession # Q9XSR0 |
| Formulation | Lyophilized from a 0.2 µm filtered solution in PBS with Trehalose. See Certificate of Analysis for details. *Small pack size (-SP) is supplied as a 0.2 µm filtered solution in PBS. |

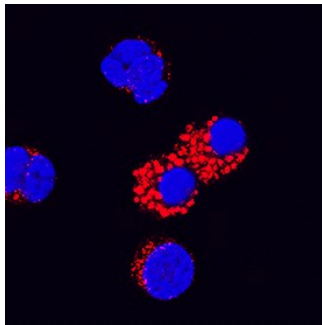
APPLICATIONS

Please Note: Optimal dilutions should be determined by each laboratory for each application. *General Protocols* are available in the *Technical Information* section on our website.

| | Recommended Concentration | Sample |
|----------------------------|----------------------------------|---------------------------------|
| Western Blot | 1 µg/mL | Recombinant Canine IL-18/IL-1F4 |
| Immunocytochemistry | 8-25 µg/mL | See Below |

DATA

Immunocytochemistry



IL-18/IL-1F4 in Canine PBMCs.
IL-18/IL-1F4 was detected in immersion fixed canine peripheral blood mononuclear cells (PBMCs) using Mouse Anti-Canine IL-18/IL-1F4 Monoclonal Antibody (Catalog # MAB29241) at 25 µg/mL for 3 hours at room temperature. Cells were stained using the NorthernLights™ 557-conjugated Anti-Mouse IgG Secondary Antibody (red; Catalog # NL007) and counterstained with DAPI (blue). Specific staining was localized to cytoplasm. View our protocol for [Fluorescent ICC Staining of Non-adherent Cells](#).

PREPARATION AND STORAGE

| | |
|--------------------------------|--|
| Reconstitution | Reconstitute at 0.5 mg/mL in sterile PBS. |
| Shipping | The product is shipped at ambient temperature. Upon receipt, store it immediately at the temperature recommended below. *Small pack size (-SP) is shipped with polar packs. Upon receipt, store it immediately at -20 to -70 °C |
| Stability & Storage | Use a manual defrost freezer and avoid repeated freeze-thaw cycles. <ul style="list-style-type: none"> • 12 months from date of receipt, -20 to -70 °C as supplied. • 1 month, 2 to 8 °C under sterile conditions after reconstitution. • 6 months, -20 to -70 °C under sterile conditions after reconstitution. |

BACKGROUND

Interleukin 18, also known as interferon-gamma-inducing factor (IGIF) or IL-1γ, is an 18 kDa member of the IL-1 superfamily which shares biologic activities with IL-12. IL-18 is expressed by liver cells, monocyte/macrophages, osteoblasts and keratinocytes. Mature canine IL-18 shares 73% sequence identity with human IL-18. Caspase-1 (IL-1 beta-converting enzyme) has been shown to process pro-IL-18 to active IL-18. Human IL-18 has been shown to enhance NK cell activity, induce the production of IFN-γ and GM-CSF and inhibit the production of IL-10 by PBMCs.