

## DESCRIPTION

<b>Species Reactivity</b>	Human
<b>Specificity</b>	Detects human HTRA1/PRSS11 in direct ELISAs.
<b>Source</b>	Monoclonal Mouse IgG <sub>2A</sub> Clone # 275603
<b>Purification</b>	Protein A or G purified from hybridoma culture supernatant
<b>Immunogen</b>	Mouse myeloma cell line NS0-derived recombinant human HTRA1/PRSS11 Gln23-Pro480 Accession # Q92743
<b>Formulation</b>	Lyophilized from a 0.2 µm filtered solution in PBS with Trehalose. See Certificate of Analysis for details. *Small pack size (-SP) is supplied either lyophilized or as a 0.2 µm filtered solution in PBS.

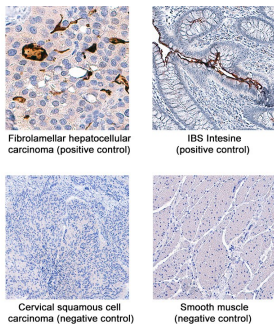
## APPLICATIONS

**Please Note:** Optimal dilutions should be determined by each laboratory for each application. [General Protocols](#) are available in the Technical Information section on our website.

	<b>Recommended Concentration</b>	<b>Sample</b>
<b>Immunohistochemistry</b>	5-25 µg/mL	See Below

## DATA

### Immunohistochemistry



**HTRA1/PRSS11 in Human Hepatocellular Carcinoma and IBS Intestine.** HTRA1/PRSS11 was detected in immersion fixed paraffin-embedded sections of human fibrolamellar hepatocellular carcinoma and IBS intestine (positive staining; upper panels) and human cervical squamous cell carcinoma and smooth muscle (negative staining; lower panels) using Mouse Anti-Human HTRA1/PRSS11 Monoclonal Antibody (Catalog # MAB29161) at 5 µg/mL for 1 hour at room temperature followed by incubation with the Anti-Mouse IgG VisUCyte™ HRP Polymer Antibody (Catalog # VC001). Before incubation with the primary antibody, tissue was subjected to heat-induced epitope retrieval using Antigen Retrieval Reagent-Basic (Catalog # CTS013). Tissue was stained using DAB (brown) and counterstained with hematoxylin (blue). Specific staining was localized to cytoplasm and plasma membrane (luminal surface of intestinal gland). View our protocol for [IHC Staining with VisUCyte HRP Polymer Detection Reagents](#).

## PREPARATION AND STORAGE

<b>Reconstitution</b>	Reconstitute at 0.5 mg/mL in sterile PBS.
<b>Shipping</b>	The product is shipped at ambient temperature. Upon receipt, store it immediately at the temperature recommended below. *Small pack size (-SP) is shipped with polar packs. Upon receipt, store it immediately at -20 to -70 °C
<b>Stability &amp; Storage</b>	<b>Use a manual defrost freezer and avoid repeated freeze-thaw cycles.</b> <ul style="list-style-type: none"> <li>• 12 months from date of receipt, -20 to -70 °C as supplied.</li> <li>• 1 month, 2 to 8 °C under sterile conditions after reconstitution.</li> <li>• 6 months, -20 to -70 °C under sterile conditions after reconstitution.</li> </ul>

## BACKGROUND

HTRA1 is a serine protease encoded by the PRSS11 gene and is expressed in many tissues. HTRA1 regulates the availability of IGFs by cleaving IGFs.