

DESCRIPTION

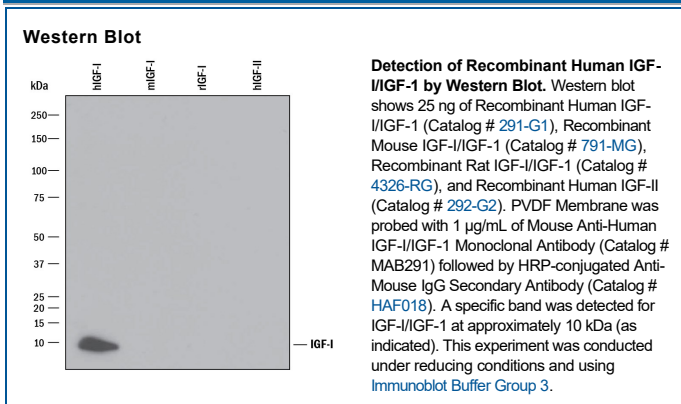
Species Reactivity	Human
Specificity	Detects human IGF-I/IGF-1 in ELISAs and Western blots. In ELISAs, this antibody does not cross-react with recombinant mouse (rm) IGF-I/IGF-1, rmIGF-II/IGF-2, or recombinant human IGF-II/IGF-2.
Source	Monoclonal Mouse IgG ₁ Clone # 56408
Purification	Protein A or G purified from ascites
Immunogen	<i>E. coli</i> -derived recombinant human IGF-I/IGF-1 Gly49-Ala118 Accession # P01343
Formulation	Lyophilized from a 0.2 µm filtered solution in PBS with Trehalose. See Certificate of Analysis for details. *Small pack size (-SP) is supplied either lyophilized or as a 0.2 µm filtered solution in PBS.

APPLICATIONS

Please Note: Optimal dilutions should be determined by each laboratory for each application. *General Protocols* are available in the *Technical Information* section on our website.

	Recommended Concentration	Sample
Western Blot	1 µg/mL	See Below
Human IGF-I/IGF-1 Sandwich Immunoassay		Reagent
ELISA Capture	2-8 µg/mL	Human IGF-I/IGF-1 Antibody (Catalog # MAB291)
ELISA Detection	0.1-0.4 µg/mL	Human IGF-I/IGF-1 Biotinylated Antibody (Catalog # BAF291)
Standard		Recombinant Human IGF-I/IGF-1 (Catalog # 291-G1)

DATA



PREPARATION AND STORAGE

Reconstitution	Reconstitute at 0.5 mg/mL in sterile PBS.
Shipping	The product is shipped at ambient temperature. Upon receipt, store it immediately at the temperature recommended below. *Small pack size (-SP) is shipped with polar packs. Upon receipt, store it immediately at -20 to -70 °C
Stability & Storage	Use a manual defrost freezer and avoid repeated freeze-thaw cycles. <ul style="list-style-type: none"> • 12 months from date of receipt, -20 to -70 °C as supplied. • 1 month, 2 to 8 °C under sterile conditions after reconstitution. • 6 months, -20 to -70 °C under sterile conditions after reconstitution.

BACKGROUND

IGF-I/IGF-1 belongs to the family of insulin-like growth factors and circulates in complex with IGF binding proteins. It is a potent mitogenic growth factor that binds the heteromeric type I and type II IGF receptors. Essentially, all of the biological activities of IGF-I/IGF-1 are mediated by IGF-I R.