

DESCRIPTION

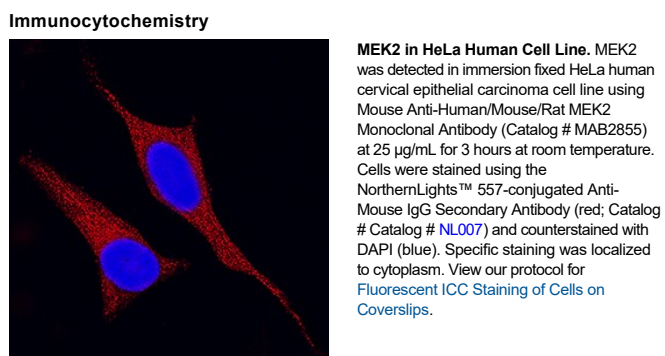
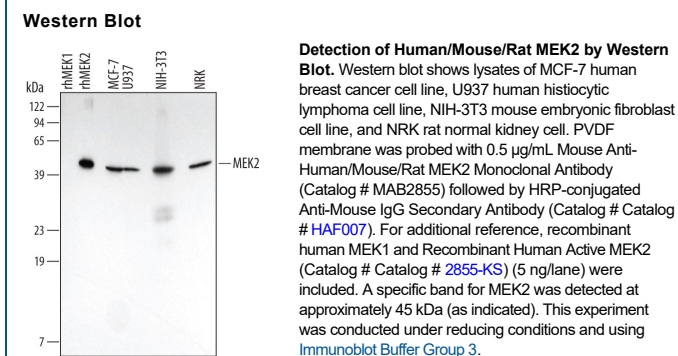
Species Reactivity	Human/Mouse/Rat
Specificity	Detects human, mouse, and rat MEK2 in direct ELISAs and Western blots. In direct ELISAs, no cross-reactivity with recombinant human (rh) MEK1 or rhMEK5 is observed.
Source	Monoclonal Mouse IgG _{2A} Clone # 300317
Purification	Protein A or G purified from hybridoma culture supernatant
Immunogen	<i>E. coli</i> -derived recombinant human MEK2 Met1-Val400 Accession # P36507
Formulation	Lyophilized from a 0.2 µm filtered solution in PBS with Trehalose. See Certificate of Analysis for details. *Small pack size (-SP) is supplied either lyophilized or as a 0.2 µm filtered solution in PBS.

APPLICATIONS

Please Note: Optimal dilutions should be determined by each laboratory for each application. [General Protocols](#) are available in the Technical Information section on our website.

	Recommended Concentration	Sample
Western Blot	0.5 µg/mL	See Below
Immunocytochemistry	8-25 µg/mL	See Below

DATA



PREPARATION AND STORAGE

Reconstitution	Reconstitute at 0.5 mg/mL in sterile PBS.
Shipping	The product is shipped at ambient temperature. Upon receipt, store it immediately at the temperature recommended below. *Small pack size (-SP) is shipped with polar packs. Upon receipt, store it immediately at -20 to -70 °C
Stability & Storage	Use a manual defrost freezer and avoid repeated freeze-thaw cycles. <ul style="list-style-type: none"> 12 months from date of receipt, -20 to -70 °C as supplied. 1 month, 2 to 8 °C under sterile conditions after reconstitution. 6 months, -20 to -70 °C under sterile conditions after reconstitution.

BACKGROUND

Mitogen-activated protein kinase kinase 2 (MEK2 or MAP2K2), also known as MKK2, belongs to the STE family of kinases. Both MEK2 and the related MEK1 are dual-specificity kinases, phosphorylating and activating the mitogen-activated protein kinases ERK1 and ERK2 at T and Y positions within the phosphoacceptor sequence T-E-Y. Activation of MEK2 by Raf occurs through phosphorylation at S222 and S226.