

DESCRIPTION

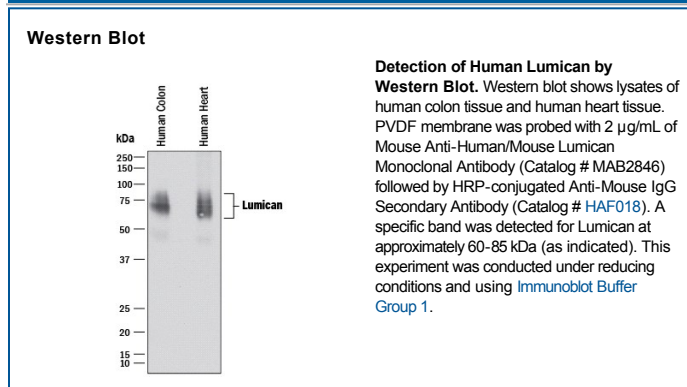
Species Reactivity	Human/Mouse
Specificity	Detects human and mouse Lumican in direct ELISAs and Western blots.
Source	Monoclonal Mouse IgG ₁ Clone # 358022
Purification	Protein A or G purified from hybridoma culture supernatant
Immunogen	Mouse myeloma cell line NS0-derived recombinant human Lumican Gln19-Asn338 Accession # P51884
Formulation	Lyophilized from a 0.2 µm filtered solution in PBS with Trehalose. See Certificate of Analysis for details. *Small pack size (-SP) is supplied as a 0.2 µm filtered solution in PBS.

APPLICATIONS

Please Note: Optimal dilutions should be determined by each laboratory for each application. *General Protocols* are available in the *Technical Information* section on our website.

	Recommended Concentration	Sample
Western Blot	2 µg/mL	See Below

DATA



PREPARATION AND STORAGE

Reconstitution	Reconstitute at 0.5 mg/mL in sterile PBS.
Shipping	The product is shipped at ambient temperature. Upon receipt, store it immediately at the temperature recommended below. *Small pack size (-SP) is shipped with polar packs. Upon receipt, store it immediately at -20 to -70 °C
Stability & Storage	Use a manual defrost freezer and avoid repeated freeze-thaw cycles. <ul style="list-style-type: none"> ● 12 months from date of receipt, -20 to -70 °C as supplied. ● 1 month, 2 to 8 °C under sterile conditions after reconstitution. ● 6 months, -20 to -70 °C under sterile conditions after reconstitution.

BACKGROUND

Lumican is a secreted matrix protein that belongs to the small leucine-rich proteoglycan (SLRP) class II family. Mature Lumican has a negatively charged N-terminal domain that contains tyrosine sulfates, followed by twelve leucine-rich repeats, which are flanked by cysteine loops. Lumican is expressed widely in mammalian connective tissues, while corneal Lumican exists as a keratan sulfate proteoglycan in adult cartilage, Lumican exists primarily as a glycoprotein and lacks keratan sulfate. The amino acid sequence of human Lumican shares 88% amino acid sequence identity with that of mature mouse Lumican.