

DESCRIPTION

Species Reactivity	Human
Specificity	Detects human EGR1 in direct ELISAs.
Source	Monoclonal Rat IgG _{2A} Clone # 406913
Purification	Protein A or G purified from hybridoma culture supernatant
Immunogen	<i>E. coli</i> -derived recombinant human EGR1 Gln282-Ser433 Accession # P18146
Formulation	Lyophilized from a 0.2 µm filtered solution in PBS with Trehalose. See Certificate of Analysis for details. *Small pack size (-SP) is supplied either lyophilized or as a 0.2 µm filtered solution in PBS.

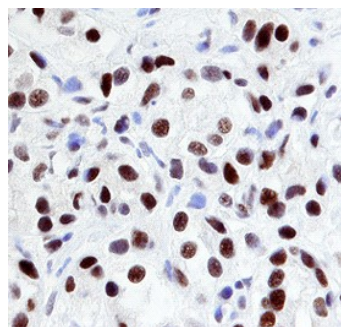
APPLICATIONS

Please Note: Optimal dilutions should be determined by each laboratory for each application. [General Protocols](#) are available in the Technical Information section on our website.

	Recommended Concentration	Sample
Immunohistochemistry	8-25 µg/mL	See Below

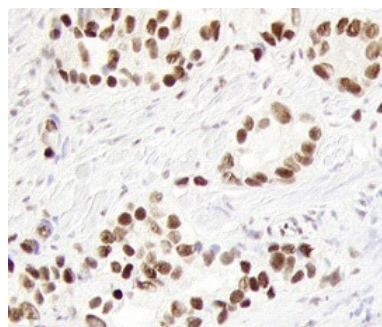
DATA

Immunohistochemistry



EGR1 in Human Prostate Cancer Tissue. EGR1 was detected in immersion fixed paraffin-embedded sections of human prostate cancer tissue using 15 µg/mL Rat Anti-Human EGR1 Monoclonal Antibody (Catalog # MAB2818) overnight at 4 °C. Before incubation with the primary antibody tissue was subjected to heat-induced epitope retrieval using Antigen Retrieval Reagent-Basic (Catalog # CTS013). Tissue was stained with the Anti-Rat HRP-DAB Cell & Tissue Staining Kit (brown; Catalog # CTS017) and counterstained with hematoxylin (blue). View our protocol for [Chromogenic IHC Staining of Paraffin-embedded Tissue Sections](#).

Immunohistochemistry



EGR1 in Human Prostate Cancer Tissue. EGR1 was detected in immersion fixed paraffin-embedded sections of human prostate cancer tissue using 15 µg/mL Rat Anti-Human EGR1 Monoclonal Antibody (Catalog # MAB2818) overnight at 4 °C. Before incubation with the primary antibody tissue was subjected to heat-induced epitope retrieval using Antigen Retrieval Reagent-Basic (Catalog # CTS013). Tissue was stained with the Anti-Rat HRP-DAB Cell & Tissue Staining Kit (brown; Catalog # CTS017) and counterstained with hematoxylin (blue). View our protocol for [Chromogenic IHC Staining of Paraffin-embedded Tissue Sections](#).

PREPARATION AND STORAGE

Reconstitution	Reconstitute at 0.5 mg/mL in sterile PBS.
Shipping	The product is shipped at ambient temperature. Upon receipt, store it immediately at the temperature recommended below. *Small pack size (-SP) is shipped with polar packs. Upon receipt, store it immediately at -20 to -70 °C
Stability & Storage	Use a manual defrost freezer and avoid repeated freeze-thaw cycles. <ul style="list-style-type: none"> 12 months from date of receipt, -20 to -70 °C as supplied. 1 month, 2 to 8 °C under sterile conditions after reconstitution. 6 months, -20 to -70 °C under sterile conditions after reconstitution.

BACKGROUND

Early Growth Response 1, (EGR1) belongs to the EGR family of zinc finger transcription factors and regulates the expression of several tumor suppressors. Its expression is induced by diverse signals that initiate growth and differentiation. EGR1 suppresses or activates cell growth depending on the tumor type. Within the region that includes its three zinc finger domains, human EGR1 shares 99% aa sequence identity with mouse and rat EGR1.