

DESCRIPTION

Species Reactivity	Human
Specificity	Detects human GLP-1R. Stains human GLP-1R-transfected Baf/3 cells but not irrelevant transfectants.
Source	Monoclonal Mouse IgG _{2A} Clone # 419208
Purification	Protein A or G purified from hybridoma culture supernatant
Immunogen	Baf/3 cell line transfected with human GLP-1R Accession # P43220
Formulation	Lyophilized from a 0.2 µm filtered solution in PBS with Trehalose. See Certificate of Analysis for details. *Small pack size (-SP) is supplied as a 0.2 µm filtered solution in PBS.

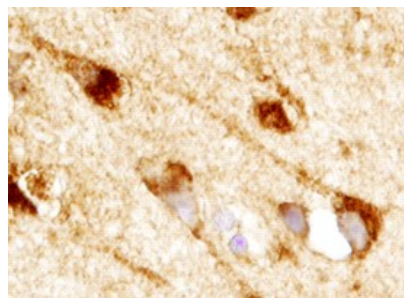
APPLICATIONS

Please Note: Optimal dilutions should be determined by each laboratory for each application. *General Protocols* are available in the *Technical Information* section on our website.

	Recommended Concentration	Sample
Immunohistochemistry	8-25 µg/mL	See Below

DATA

Immunohistochemistry



GLP-1R in Human Brain.
GLP-1R was detected in immersion fixed paraffin-embedded sections of human brain (hippocampus) using 3 µg/mL Mouse Anti-Human GLP-1R Monoclonal Antibody (Catalog # MAB28141) overnight at 4 °C. Tissue was stained with the Anti-Mouse HRP-DAB Cell & Tissue Staining Kit (brown; Catalog # CTS002) and counter-stained with hematoxylin (blue). View our protocol for [Chromogenic IHC Staining of Paraffin-embedded Tissue Sections](#).

PREPARATION AND STORAGE

Reconstitution	Reconstitute at 0.5 mg/mL in sterile PBS.
Shipping	The product is shipped at ambient temperature. Upon receipt, store it immediately at the temperature recommended below. *Small pack size (-SP) is shipped with polar packs. Upon receipt, store it immediately at -20 to -70 °C
Stability & Storage	Use a manual defrost freezer and avoid repeated freeze-thaw cycles. <ul style="list-style-type: none"> ● 12 months from date of receipt, -20 to -70 °C as supplied. ● 1 month, 2 to 8 °C under sterile conditions after reconstitution. ● 6 months, -20 to -70 °C under sterile conditions after reconstitution.

BACKGROUND

Glucagon-Like Peptide-1 Receptor (GLP-1R) is a class B G protein-linked seven transmembrane domain protein that is expressed in pancreas, lung, heart, kidney, hypothalamus, and stomach. GLP-1R functions as a receptor for glucagon-like peptide 1 and regulates insulin and glucagon production.