

DESCRIPTION

| | |
|---------------------------|---|
| Species Reactivity | Mouse |
| Specificity | Detects mouse TLR4 in direct ELISAs. In direct ELISAs, does not cross-react with recombinant mouse TLR1, 2, 3, 6, or recombinant human TLR4. |
| Source | Monoclonal Rat IgG _{2A} Clone # 267518 |
| Purification | Protein A or G purified from hybridoma culture supernatant |
| Immunogen | Mouse myeloma cell line NS0-derived recombinant mouse TLR4 Asn26-Lys629 Accession # Q9QUK6 |
| Formulation | Lyophilized from a 0.2 µm filtered solution in PBS with Trehalose. See Certificate of Analysis for details. *Small pack size (-SP) is supplied as a 0.2 µm filtered solution in PBS. |

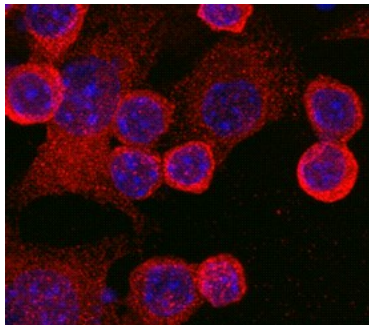
APPLICATIONS

Please Note: Optimal dilutions should be determined by each laboratory for each application. *General Protocols* are available in the *Technical Information* section on our website.

| | Recommended Concentration | Sample |
|----------------------------|--|--|
| Flow Cytometry | 2.5 µg/10 ⁶ cells | RAW 264.7 mouse monocyte/macrophage cell line treated with LPS, fixed with paraformaldehyde and permeabilized with saponin |
| Immunocytochemistry | 8-25 µg/mL | See Below |
| CyTOF-ready | Ready to be labeled using established conjugation methods. No BSA or other carrier proteins that could interfere with conjugation. | |

DATA

Immunocytochemistry



TLR4 in RAW 264.7 Mouse Monocyte/Macrophage Cell Line.
TLR4 was detected in immersion fixed RAW 264.7 mouse monocyte/macrophage cell line using Rat Anti-Mouse TLR4 Monoclonal Antibody (Catalog # MAB2759) at 10 µg/mL for 3 hours at room temperature. Cells were stained using the NorthernLights™ 557-conjugated Anti-Rat IgG Secondary Antibody (red; Catalog # NL013) and counterstained with DAPI (blue). Specific staining was localized to the cell surface. View our protocol for [Fluorescent ICC Staining of Cells on Coverslips](#).

PREPARATION AND STORAGE

| | |
|--------------------------------|--|
| Reconstitution | Reconstitute at 0.5 mg/mL in sterile PBS. |
| Shipping | The product is shipped at ambient temperature. Upon receipt, store it immediately at the temperature recommended below. *Small pack size (-SP) is shipped with polar packs. Upon receipt, store it immediately at -20 to -70 °C |
| Stability & Storage | Use a manual defrost freezer and avoid repeated freeze-thaw cycles. <ul style="list-style-type: none"> ● 12 months from date of receipt, -20 to -70 °C as supplied. ● 1 month, 2 to 8 °C under sterile conditions after reconstitution. ● 6 months, -20 to -70 °C under sterile conditions after reconstitution. |

BACKGROUND

TLR4 belongs to the IL-1 receptor/Toll-like receptor superfamily. It is expressed in placenta and peripheral blood leukocytes. TLR4 is the pattern recognition receptor for LPS.