

DESCRIPTION

Species Reactivity	Human
Specificity	Detects human RelB.
Source	Monoclonal Mouse IgG _{2B} Clone # 315206
Purification	Protein A or G purified from hybridoma culture supernatant
Immunogen	<i>E. coli</i> -derived recombinant human RelB Gln382-Thr579 Accession # Q01201
Formulation	Lyophilized from a 0.2 µm filtered solution in PBS with Trehalose. See Certificate of Analysis for details. *Small pack size (-SP) is supplied either lyophilized or as a 0.2 µm filtered solution in PBS.

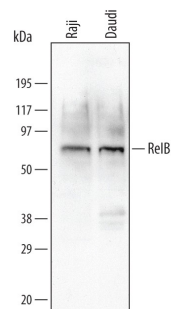
APPLICATIONS

Please Note: Optimal dilutions should be determined by each laboratory for each application. *General Protocols* are available in the *Technical Information* section on our website.

	Recommended Concentration	Sample
Western Blot	0.1 µg/mL	See Below
Immunocytochemistry	8-25 µg/mL	See Below
Immunohistochemistry	8-25 µg/mL	See Below

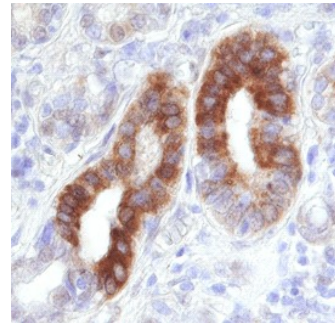
DATA

Western Blot



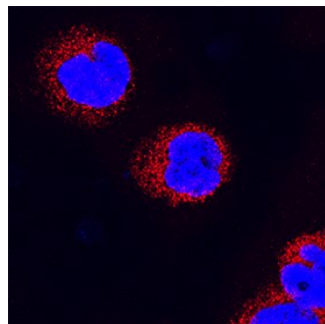
Detection of Human RelB by Western Blot. Western blot shows lysates of Daudi human Burkitt's lymphoma cell line and Raji human Burkitt's lymphoma cell line. PVDF membrane was probed with 0.1 µg/mL of Mouse Anti-Human RelB Monoclonal Antibody (Catalog # MAB2698) followed by HRP-conjugated Anti-Mouse IgG Secondary Antibody (Catalog # HAF007). A specific band was detected for RelB at approximately 70 kDa (as indicated). This experiment was conducted under reducing conditions and using [Immunoblot Buffer Group 4](#).

Immunohistochemistry



RelB in Human Lymphoma. RelB was detected in immersion fixed paraffin-embedded sections of human lymphoma using 8 µg/mL Mouse Anti-Human RelB Monoclonal Antibody (Catalog # MAB2698) overnight at 4 °C. Tissue was stained with the Anti-Mouse HRP-DAB Cell & Tissue Staining Kit (brown; Catalog # CTS002) and counterstained with hematoxylin (blue). Specific labeling was localized to the cytoplasm in epithelial cells. View our protocol for [Chromogenic IHC Staining of Paraffin-embedded Tissue Sections](#).

Immunocytochemistry



RelB in Raji Human Cell Line. RelB was detected in immersion fixed Raji human Burkitt's lymphoma cell line using Mouse Anti-Human RelB Monoclonal Antibody (Catalog # MAB2698) at 25 µg/mL for 3 hours at room temperature. Cells were stained using the NorthernLights™ 557-conjugated Anti-Mouse IgG Secondary Antibody (red; Catalog # NL007) and counterstained with DAPI (blue). Specific staining was localized to cytoplasm. View our protocol for [Fluorescent ICC Staining of Non-adherent Cells](#).

PREPARATION AND STORAGE

Reconstitution	Reconstitute at 0.5 mg/mL in sterile PBS.
Shipping	The product is shipped at ambient temperature. Upon receipt, store it immediately at the temperature recommended below. *Small pack size (-SP) is shipped with polar packs. Upon receipt, store it immediately at -20 to -70 °C
Stability & Storage	Use a manual defrost freezer and avoid repeated freeze-thaw cycles. <ul style="list-style-type: none"> ● 12 months from date of receipt, -20 to -70 °C as supplied. ● 1 month, 2 to 8 °C under sterile conditions after reconstitution. ● 6 months, -20 to -70 °C under sterile conditions after reconstitution.

BACKGROUND

RelB is a member of the NFκB family and can act as either an activator or repressor of transcription by forming heterodimers with the p50 and p52 NFκB family members. Although RelB knock out mice are viable, there are complex abnormalities in their inflammatory response, hematopoietic lineage and formation of secondary lymphoid structures.