

DESCRIPTION

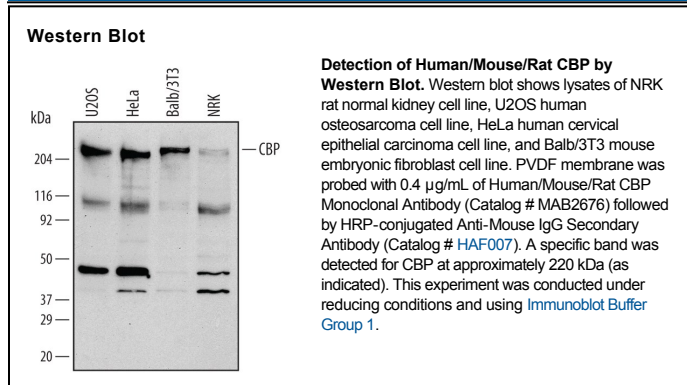
Species Reactivity	Human/Mouse/Rat
Specificity	Detects human, mouse and rat CBP.
Source	Monoclonal Mouse IgG _{2B} Clone # 257003
Purification	Protein A or G purified from hybridoma culture supernatant
Immunogen	<i>E. coli</i> -derived recombinant human CBP Asn2141-Leu2442 Accession # Q92793
Formulation	Lyophilized from a 0.2 µm filtered solution in PBS with Trehalose. See Certificate of Analysis for details. *Small pack size (-SP) is supplied as a 0.2 µm filtered solution in PBS.

APPLICATIONS

Please Note: Optimal dilutions should be determined by each laboratory for each application. General Protocols are available in the Technical Information section on our website.

	Recommended Concentration	Sample
Western Blot	0.4 µg/mL	See Below
Immunocytochemistry	8-25 µg/mL	Immersion fixed HeLa human cervical epithelial carcinoma cell line

DATA



PREPARATION AND STORAGE

Reconstitution	Reconstitute at 0.5 mg/mL in sterile PBS.
Shipping	The product is shipped at ambient temperature. Upon receipt, store it immediately at the temperature recommended below. *Small pack size (-SP) is shipped with polar packs. Upon receipt, store it immediately at -20 to -70 °C
Stability & Storage	Use a manual defrost freezer and avoid repeated freeze-thaw cycles. <ul style="list-style-type: none"> ● 12 months from date of receipt, -20 to -70 °C as supplied. ● 1 month, 2 to 8 °C under sterile conditions after reconstitution. ● 6 months, -20 to -70 °C under sterile conditions after reconstitution.

BACKGROUND

The CBP (CREB-binding protein) is a histone acetyltransferase and transcriptional coactivator that regulates RNA polymerase II transcription. In addition to histone acetylation, CBP also acetylates various transcription factors, including the tumor suppressor protein p53, to enhance sequence-specific DNA binding.