

DESCRIPTION

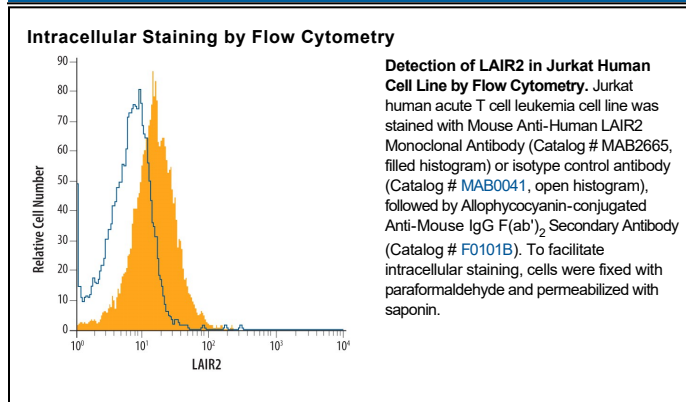
Species Reactivity	Human
Specificity	Detects human LAIR2 in direct ELISAs and Western blots. In direct ELISAs and Western blots, no cross-reactivity with recombinant human LAIR1, recombinant mouse (rm) LAIR1 or rmLAIR2 is observed.
Source	Monoclonal Mouse IgG _{2B} Clone # 319701
Purification	Protein A or G purified from hybridoma culture supernatant
Immunogen	Mouse myeloma cell line NS0-derived recombinant human LAIR2 isoform 1 Gln22-Pro152 Accession # Q6I5S4
Formulation	Lyophilized from a 0.2 µm filtered solution in PBS with Trehalose. See Certificate of Analysis for details. *Small pack size (-SP) is supplied either lyophilized or as a 0.2 µm filtered solution in PBS.

APPLICATIONS

Please Note: Optimal dilutions should be determined by each laboratory for each application. *General Protocols* are available in the *Technical Information* section on our website.

	Recommended Concentration	Sample
Western Blot	1 µg/mL	Recombinant Human LAIR2 (Catalog # 2665-LR)
Intracellular Staining by Flow Cytometry	2.5 µg/10 ⁶ cells	See Below
CyTOF-ready	Ready to be labeled using established conjugation methods. No BSA or other carrier proteins that could interfere with conjugation.	

DATA



PREPARATION AND STORAGE

Reconstitution	Reconstitute at 0.5 mg/mL in sterile PBS.
Shipping	The product is shipped at ambient temperature. Upon receipt, store it immediately at the temperature recommended below. *Small pack size (-SP) is shipped with polar packs. Upon receipt, store it immediately at -20 to -70 °C
Stability & Storage	Use a manual defrost freezer and avoid repeated freeze-thaw cycles. <ul style="list-style-type: none"> ● 12 months from date of receipt, -20 to -70 °C as supplied. ● 1 month, 2 to 8 °C under sterile conditions after reconstitution. ● 6 months, -20 to -70 °C under sterile conditions after reconstitution.

BACKGROUND

LAIR2 (leukocyte-associated Ig-like receptor-2; CD306) is a secreted, 131 amino acid (aa) protein that contains one Ig-like C2 type domain, making it a member of the Ig superfamily. When compared to LAIR1, its transmembrane counterpart, it shares 83% aa identity across the signal sequence and extracellular domains (1-3). Although one is secreted and one is membrane-bound, the two LAIR proteins are thought to have arisen from a common gene ancestor and appear to share similar adhesion profiles. This suggests that LAIR2 may compete with LAIR1 for ligand binding (3, 4). A 114 aa alternate splice form of LAIR2 is truncated at the C terminus, but retains the entire Ig domain (1-3). The expression profile of these splice forms, and the presence of orthologs in other species, have not been reported.

References:

1. Meyaard, L. (2003) J. Biol. Regul. Homeost. Agents **17**:330.
2. Meyaard, L. *et al.* (1999) J. Immunol. **162**:5800.
3. Meyaard, L. *et al.* (1997) Immunity **7**:283.
4. Xu, X.G. *et al.* (2005) Xi Bao Yu Fen Zi Mian Yi Xue Za Zhi. **21**:553.