

DESCRIPTION

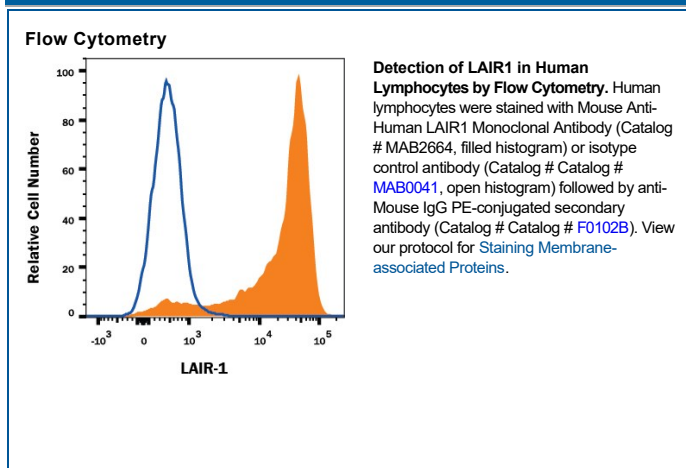
Species Reactivity	Human
Specificity	Detects human LAIR1 in direct ELISAs and Western blots. In direct ELISAs and Western blots, no cross-reactivity with recombinant human LAIR2 or recombinant mouse LAIR1 is observed.
Source	Monoclonal Mouse IgG _{2B} Clone # 342219
Purification	Protein A or G purified from hybridoma culture supernatant
Immunogen	Mouse myeloma cell line NS0-derived recombinant human LAIR1 isoform 1 Gln22-His163 Accession # Q6GTX8
Formulation	Lyophilized from a 0.2 µm filtered solution in PBS with Trehalose. See Certificate of Analysis for details. *Small pack size (-SP) is supplied either lyophilized or as a 0.2 µm filtered solution in PBS.

APPLICATIONS

Please Note: Optimal dilutions should be determined by each laboratory for each application. *General Protocols* are available in the *Technical Information* section on our website.

	Recommended Concentration	Sample
Western Blot	1 µg/mL	Recombinant Human LAIR1
Flow Cytometry	0.25 µg/10 ⁶ cells	See Below
CyTOF-ready	Ready to be labeled using established conjugation methods. No BSA or other carrier proteins that could interfere with conjugation.	

DATA



PREPARATION AND STORAGE

Reconstitution	Reconstitute at 0.5 mg/mL in sterile PBS.
Shipping	The product is shipped at ambient temperature. Upon receipt, store it immediately at the temperature recommended below. *Small pack size (-SP) is shipped with polar packs. Upon receipt, store it immediately at -20 to -70 °C
Stability & Storage	Use a manual defrost freezer and avoid repeated freeze-thaw cycles. <ul style="list-style-type: none"> • 12 months from date of receipt, -20 to -70 °C as supplied. • 1 month, 2 to 8 °C under sterile conditions after reconstitution. • 6 months, -20 to -70 °C under sterile conditions after reconstitution.

BACKGROUND

Leukocyte-associated Ig-like receptor-1 (LAIR1; also CD305) is a 46 kDa inhibitory receptor belonging to the Ig superfamily. It is a type I transmembrane protein with one extracellular Ig-like domain and two cytoplasmic ITIMs. Four LAIR-1 splice variants exist. LAIR1b has a 17 aa deletion outside the Ig loop in the extracellular domain. It differs from LAIR1c by one aa residue. LAIR1d has a 77 aa truncation in the cytoplasmic domain. LAIR1 is expressed on NK cells, T cells, B cells, monocytes, dendritic cells and most thymocytes. The extracellular domain of human LAIR1 shares 40% aa identity with that of the mouse protein.