

DESCRIPTION

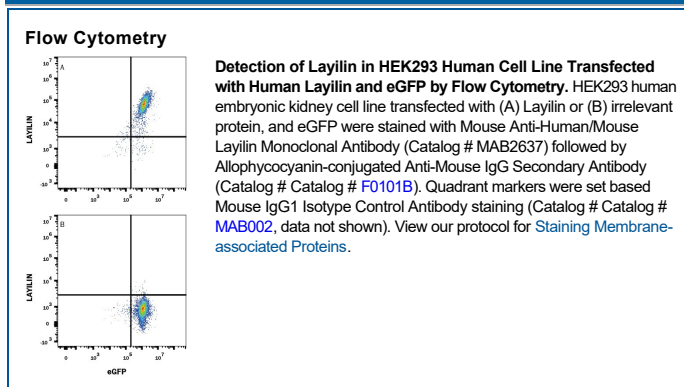
Species Reactivity	Human/Mouse
Specificity	Detects human and mouse Layilin in direct ELISAs and Western blots.
Source	Monoclonal Mouse IgG ₁ Clone # 328024
Purification	Protein A or G purified from hybridoma culture supernatant
Immunogen	Mouse myeloma cell line NS0-derived recombinant human Layilin Ala22-Glu220 Accession # NP_849156
Formulation	Lyophilized from a 0.2 µm filtered solution in PBS with Trehalose. See Certificate of Analysis for details. *Small pack size (-SP) is supplied either lyophilized or as a 0.2 µm filtered solution in PBS.

APPLICATIONS

Please Note: Optimal dilutions should be determined by each laboratory for each application. [General Protocols](#) are available in the Technical Information section on our website.

	Recommended Concentration	Sample
Western Blot	1 µg/mL	Recombinant Human Layilin (Catalog # 2536-LA) Recombinant Mouse Layilin (Catalog # 2646-LA)
Flow Cytometry	0.25 µg/10 ⁶ cells	See Below
Immunoprecipitation	25 µg/mL	Conditioned cell culture medium spiked with Recombinant Human Layilin (Catalog # 2536-LA), see our available Western blot detection antibodies
CyTOF-ready	Ready to be labeled using established conjugation methods. No BSA or other carrier proteins that could interfere with conjugation.	

DATA



PREPARATION AND STORAGE

Reconstitution	Reconstitute at 0.5 mg/mL in sterile PBS.
Shipping	The product is shipped at ambient temperature. Upon receipt, store it immediately at the temperature recommended below. *Small pack size (-SP) is shipped with polar packs. Upon receipt, store it immediately at -20 to -70 °C
Stability & Storage	Use a manual defrost freezer and avoid repeated freeze-thaw cycles. <ul style="list-style-type: none"> • 12 months from date of receipt, -20 to -70 °C as supplied. • 1 month, 2 to 8 °C under sterile conditions after reconstitution. • 6 months, -20 to -70 °C under sterile conditions after reconstitution.

BACKGROUND

Layilin is a type I transmembrane protein that acts as a receptor for hyaluronan. It has an extracellular C-type lectin domain and a 123 aa cytoplasmic domain that interacts with the cytoskeleton. The amino acid sequence of recombinant human Layilin is 85%, 82%, 80%, 79% and 76% identical to that of hamster, canine, bovine, mouse and rat.