

DESCRIPTION

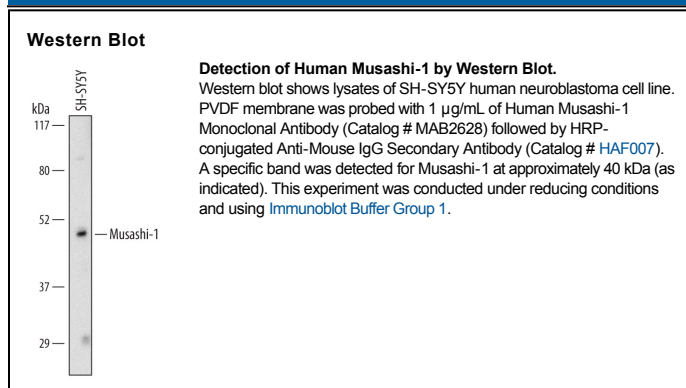
Species Reactivity	Human
Specificity	Detects human Musashi-1 in Western blots.
Source	Monoclonal Mouse IgG _{2B} Clone # 282613
Purification	Protein A or G purified from hybridoma culture supernatant
Immunogen	<i>E. coli</i> -derived recombinant human Musashi-1 aa 1-362
Formulation	Lyophilized from a 0.2 µm filtered solution in PBS with Trehalose. See Certificate of Analysis for details. *Small pack size (-SP) is supplied as a 0.2 µm filtered solution in PBS.

APPLICATIONS

Please Note: Optimal dilutions should be determined by each laboratory for each application. *General Protocols* are available in the *Technical Information* section on our website.

	Recommended Concentration	Sample
Western Blot	1 µg/mL	See Below

DATA



PREPARATION AND STORAGE

Reconstitution	Reconstitute at 0.5 mg/mL in sterile PBS.
Shipping	The product is shipped at ambient temperature. Upon receipt, store it immediately at the temperature recommended below. *Small pack size (-SP) is shipped with polar packs. Upon receipt, store it immediately at -20 to -70 °C
Stability & Storage	Use a manual defrost freezer and avoid repeated freeze-thaw cycles. <ul style="list-style-type: none"> ● 12 months from date of receipt, -20 to -70 °C as supplied. ● 1 month, 2 to 8 °C under sterile conditions after reconstitution. ● 6 months, -20 to -70 °C under sterile conditions after reconstitution.

BACKGROUND

Musashi-1 is an RNA-binding protein that is expressed in the developing central nervous system. Expression is highest in proliferating multipotent neural precursor cells and decreases during neuronal differentiation (1, 2).

References:

1. Kaneko, Y. *et al.* (2000) *Dev. Neurosci.* **22**:139.
2. Kanemura, Y. *et al.* (2002) *Meth. Mol. Biol.* **198**:273.