

DESCRIPTION

Species Reactivity	Feline
Specificity	Detects feline CD4 in direct ELISAs and Western blots. In direct ELISAs and Western blots, no cross-reactivity with CD4 from canine, human, or mouse is observed.
Source	Monoclonal Mouse IgG _{2A} Clone # 372711
Purification	Protein A or G purified from hybridoma culture supernatant
Immunogen	Mouse myeloma cell line NS0-derived recombinant feline CD4
Formulation	Lyophilized from a 0.2 µm filtered solution in PBS with Trehalose. See Certificate of Analysis for details. *Small pack size (-SP) is supplied either lyophilized or as a 0.2 µm filtered solution in PBS.

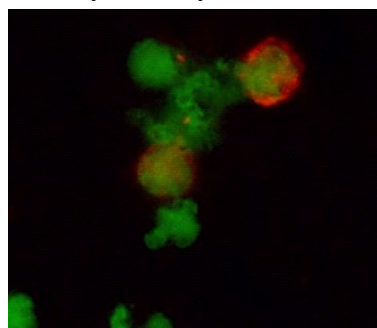
APPLICATIONS

Please Note: Optimal dilutions should be determined by each laboratory for each application. [General Protocols](#) are available in the Technical Information section on our website.

	Recommended Concentration	Sample
Western Blot	1 µg/mL	Recombinant Feline CD4
Immunocytochemistry	8-25 µg/mL	See Below

DATA

Immunocytochemistry



CD4 in Feline PBMCs. CD4 was detected in immersion fixed non-stimulated feline peripheral blood mononuclear cells (PBMCs) using 25 µg/mL Mouse Anti-Feline CD4 Monoclonal Antibody (Catalog # MAB25971) for 3 hours at room temperature. Cells were stained (red) and counterstained (green). View our protocol for [Fluorescent ICC Staining of Non-adherent Cells](#).

PREPARATION AND STORAGE

Reconstitution	Reconstitute at 0.5 mg/mL in sterile PBS.
Shipping	The product is shipped at ambient temperature. Upon receipt, store it immediately at the temperature recommended below. *Small pack size (-SP) is shipped with polar packs. Upon receipt, store it immediately at -20 to -70 °C
Stability & Storage	Use a manual defrost freezer and avoid repeated freeze-thaw cycles. <ul style="list-style-type: none"> 12 months from date of receipt, -20 to -70 °C as supplied. 1 month, 2 to 8 °C under sterile conditions after reconstitution. 6 months, -20 to -70 °C under sterile conditions after reconstitution.

BACKGROUND

CD4 is a type I membrane glycoprotein belonging to the immunoglobulin superfamily. It is expressed predominantly on thymocytes and a subset of mature T lymphocytes. CD4 functions in collaboration with the T cell receptor in the recognition of peptide antigens that are presented by class II major histocompatibility complexes.