

**DESCRIPTION**

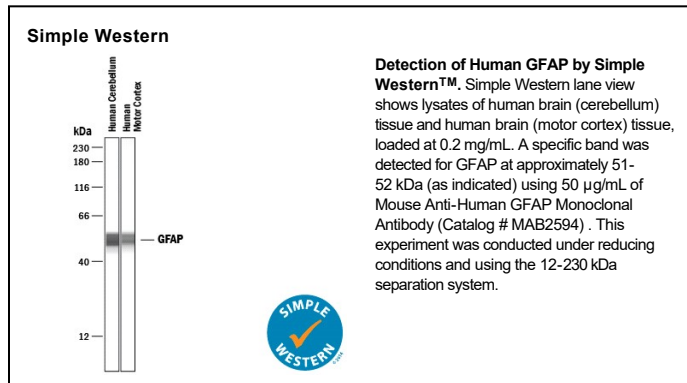
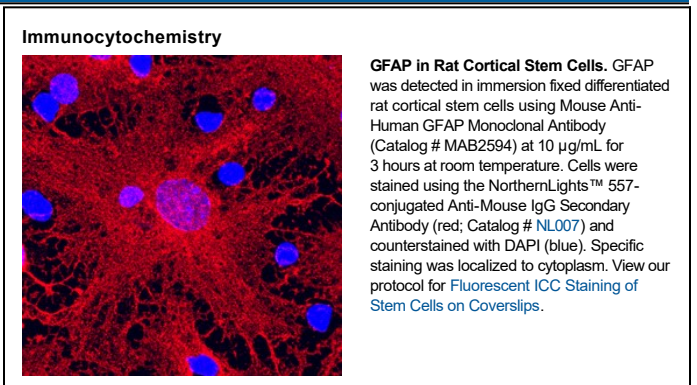
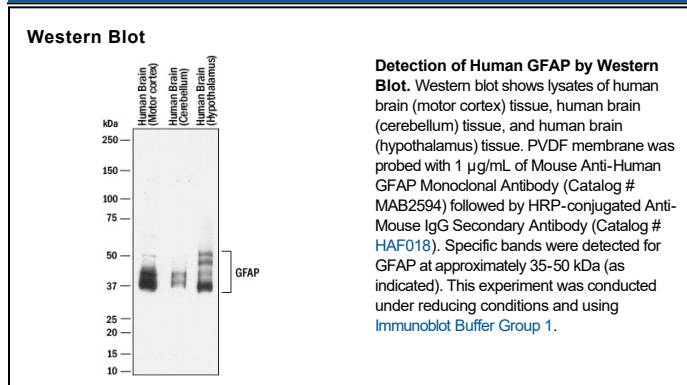
<b>Species Reactivity</b>	Human
<b>Specificity</b>	Detects human GFAP in direct ELISAs and Western blots.
<b>Source</b>	Monoclonal Mouse IgG <sub>1</sub> Clone # 273807
<b>Purification</b>	Protein A or G purified from hybridoma culture supernatant
<b>Immunogen</b>	<i>E. coli</i> -derived recombinant human GFAP Leu292-Met432 Accession # P14136
<b>Formulation</b>	Lyophilized from a 0.2 µm filtered solution in PBS with Trehalose. See Certificate of Analysis for details. *Small pack size (-SP) is supplied either lyophilized or as a 0.2 µm filtered solution in PBS.

**APPLICATIONS**

Please Note: Optimal dilutions should be determined by each laboratory for each application. General Protocols are available in the Technical Information section on our website.

	<b>Recommended Concentration</b>	<b>Sample</b>
<b>Western Blot</b>	1 µg/mL	See Below
<b>Immunocytochemistry</b>	8-25 µg/mL	See Below
<b>Simple Western</b>	50 µg/mL	See Below

**DATA**



**PREPARATION AND STORAGE**

<b>Reconstitution</b>	Reconstitute at 0.5 mg/mL in sterile PBS.
<b>Shipping</b>	The product is shipped at ambient temperature. Upon receipt, store it immediately at the temperature recommended below. *Small pack size (-SP) is shipped with polar packs. Upon receipt, store it immediately at -20 to -70 °C
<b>Stability &amp; Storage</b>	<b>Use a manual defrost freezer and avoid repeated freeze-thaw cycles.</b> <ul style="list-style-type: none"> <li>● 12 months from date of receipt, -20 to -70 °C as supplied.</li> <li>● 1 month, 2 to 8 °C under sterile conditions after reconstitution.</li> <li>● 6 months, -20 to -70 °C under sterile conditions after reconstitution.</li> </ul>

**BACKGROUND**

Glial Fibrillary Acidic Protein (GFAP) is the predominant component of astrocyte intermediate filaments in the central nervous system. It has also been detected in the glial cells of the enteric nervous system and some Schwann cells in the peripheral nervous systems.