

DESCRIPTION

Species Reactivity	Mouse
Specificity	Detects mouse Epimorphin/Syntaxin 2 in direct ELISAs and Western blots. In direct ELISAs and Western blots, no cross-reactivity with recombinant human Epimorphin is observed.
Source	Monoclonal Rat IgG _{2A} Clone # 338930
Purification	Protein A or G purified from hybridoma culture supernatant
Immunogen	<i>E. coli</i> -derived recombinant mouse Epimorphin/Syntaxin 2 Met1-Arg189 Accession # Q00262
Formulation	Lyophilized from a 0.2 µm filtered solution in PBS with Trehalose. See Certificate of Analysis for details. *Small pack size (-SP) is supplied as a 0.2 µm filtered solution in PBS.

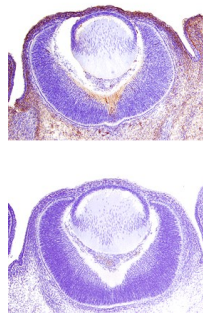
APPLICATIONS

Please Note: Optimal dilutions should be determined by each laboratory for each application. *General Protocols* are available in the *Technical Information* section on our website.

	Recommended Concentration	Sample
Western Blot	1 µg/mL	Recombinant Mouse Epimorphin/Syntaxin 2
Immunohistochemistry	8-25 µg/mL	See Below

DATA

Immunohistochemistry



Epimorphin/Syntaxin 2 in Embryonic Mouse Eye Cup.
Epimorphin/Syntaxin 2 was detected in immersion fixed frozen sections of embryonic mouse eye cup (13 d.p.c.) using 8 µg/mL Rat Anti-Mouse Epimorphin/Syntaxin 2 Monoclonal Antibody (Catalog # MAB2568) overnight at 4 °C. Tissue was stained with the Anti-Rat HRP-DAB Cell & Tissue Staining Kit (brown; Catalog # CTS017) and counterstained with hematoxylin (blue). Lower panel shows a lack of labeling if primary antibodies are omitted and tissue is stained only with secondary antibody followed by incubation with detection reagents. View our protocol for [Chromogenic IHC Staining of Frozen Tissue Sections](#).

PREPARATION AND STORAGE

Reconstitution	Reconstitute at 0.5 mg/mL in sterile PBS.
Shipping	The product is shipped at ambient temperature. Upon receipt, store it immediately at the temperature recommended below. *Small pack size (-SP) is shipped with polar packs. Upon receipt, store it immediately at -20 to -70 °C
Stability & Storage	Use a manual defrost freezer and avoid repeated freeze-thaw cycles. <ul style="list-style-type: none"> ● 12 months from date of receipt, -20 to -70 °C as supplied. ● 1 month, 2 to 8 °C under sterile conditions after reconstitution. ● 6 months, -20 to -70 °C under sterile conditions after reconstitution.

BACKGROUND

Epimorphin, also known as syntaxin 2, is a member of the highly conserved syntaxin family. It is a type IV integral membrane protein with a C-terminal membrane anchor and an N-terminal functional domain. Epimorphin can assume membrane topology with the functional domain localized extracellularly or to the cytoplasmic face. Extracellular Epimorphin functions in morphogenesis while intracellular Epimorphin functions as a vesicle fusion protein. Mouse Epimorphin functional domain shares 97% and 91% amino acid sequence homology with rat and human Epimorphin, respectively.