

**DESCRIPTION**

<b>Species Reactivity</b>	Mouse
<b>Specificity</b>	Reacts with mouse Laminin-1 A and B chains on the long arm below the cross region.
<b>Source</b>	Monoclonal Rat IgG <sub>1</sub> Clone # AL-2
<b>Purification</b>	Protein A or G purified from hybridoma culture supernatant
<b>Immunogen</b>	Purified fragment of chymotrypsin-digested mouse EHS tumor-derived Laminin-1
<b>Endotoxin Level</b>	<0.10 EU per 1 µg of the antibody by the LAL method.
<b>Formulation</b>	Lyophilized from a 0.2 µm filtered solution in PBS with Trehalose. See Certificate of Analysis for details. *Small pack size (-SP) is supplied as a 0.2 µm filtered solution in PBS.

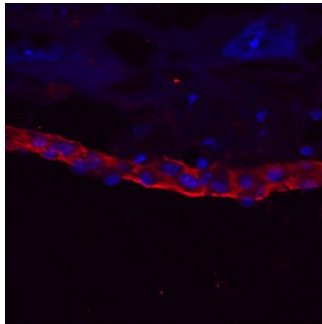
**APPLICATIONS**

**Please Note:** Optimal dilutions should be determined by each laboratory for each application. *General Protocols* are available in the *Technical Information* section on our website.

	<b>Recommended Concentration</b>	<b>Sample</b>
<b>Immunohistochemistry</b>	8-25 µg/mL	See Below
<b>Western Blot</b>	Skubitz, A.P. <i>et al.</i> (1987) <i>Exp. Cell Res.</i> <b>173</b> :349. This application was not tested by R&D Systems.	
<b>Adhesion Blockade</b>	Skubitz, A.P. <i>et al.</i> (1987) <i>Exp. Cell Res.</i> <b>173</b> :349.	

**DATA**

**Immunohistochemistry**



**Laminin-1 in Mouse Embryo.** Laminin-1 was detected in immersion fixed frozen sections of embryonic mouse parietal endoderm (E10.5) using Mouse Laminin-1 Monoclonal Antibody (Catalog # MAB2549) at 10 µg/mL overnight at 4 °C. Tissue was stained using the NorthernLights™ 637-conjugated Anti-Rat IgG Secondary Antibody (red; Catalog # NL014) and counterstained with DAPI (blue). View our protocol for [Fluorescent IHC Staining of Frozen Tissue Sections](#).

**PREPARATION AND STORAGE**

<b>Reconstitution</b>	Reconstitute at 0.5 mg/mL in sterile PBS.
<b>Shipping</b>	The product is shipped at ambient temperature. Upon receipt, store it immediately at the temperature recommended below. *Small pack size (-SP) is shipped with polar packs. Upon receipt, store it immediately at -20 to -70 °C
<b>Stability &amp; Storage</b>	<b>Use a manual defrost freezer and avoid repeated freeze-thaw cycles.</b> <ul style="list-style-type: none"> <li>● 12 months from date of receipt, -20 to -70 °C as supplied.</li> <li>● 1 month, 2 to 8 °C under sterile conditions after reconstitution.</li> <li>● 6 months, -20 to -70 °C under sterile conditions after reconstitution.</li> </ul>

**BACKGROUND**

Laminins are heterotrimeric, noncollagenous glycoproteins composed of alpha, beta and gamma chains. Through interactions with integrins, dystroglycan, and other receptors, laminins contribute to cell differentiation, cell shape and migration, maintenance of tissue phenotypes, and survival.