

## DESCRIPTION

<b>Species Reactivity</b>	Human/Mouse
<b>Specificity</b>	Detects human and mouse Pax3 in direct ELISAs and Western blots.
<b>Source</b>	Monoclonal Mouse IgG <sub>2A</sub> Clone # 274212
<b>Purification</b>	Protein A or G purified from hybridoma culture supernatant
<b>Immunogen</b>	<i>E. coli</i> -derived recombinant human Pax3 (isoform Pax3a) Met1-Ser215 Accession # NP_000429
<b>Formulation</b>	Lyophilized from a 0.2 µm filtered solution in PBS with Trehalose. See Certificate of Analysis for details. *Small pack size (-SP) is supplied either lyophilized or as a 0.2 µm filtered solution in PBS.

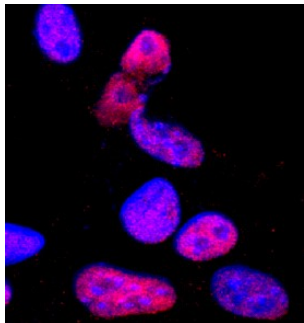
## APPLICATIONS

**Please Note:** Optimal dilutions should be determined by each laboratory for each application. *General Protocols* are available in the *Technical Information* section on our website.

	<b>Recommended Concentration</b>	<b>Sample</b>
<b>Western Blot</b>	1 µg/mL	Recombinant Human Pax3
<b>Immunocytochemistry</b>	8-25 µg/mL	See Below
<b>Intracellular Staining by Flow Cytometry</b>	0.25 µg/10 <sup>6</sup> cells	B16-F1 mouse melanoma cell line fixed with paraformaldehyde and permeabilized with saponin
<b>CyTOF-ready</b>	Ready to be labeled using established conjugation methods. No BSA or other carrier proteins that could interfere with conjugation.	

## DATA

### Immunocytochemistry



**Pax3 in B16-F1 Mouse Cell Line.** Pax3 was detected in immersion fixed B16-F1 mouse melanoma cell line using Mouse Anti-Human/Mouse Pax3 Monoclonal Antibody (Catalog # MAB2457) at 2 µg/mL for 3 hours at room temperature. Cells were stained using the NorthernLights™ 557-conjugated Anti-Mouse IgG Secondary Antibody (red; Catalog # NL007) and counterstained with DAPI (blue). Specific staining was localized to nuclei. View our protocol for [Fluorescent ICC Staining of Cells on Coverslips](#).

## PREPARATION AND STORAGE

<b>Reconstitution</b>	Reconstitute at 0.5 mg/mL in sterile PBS.
<b>Shipping</b>	The product is shipped at ambient temperature. Upon receipt, store it immediately at the temperature recommended below. *Small pack size (-SP) is shipped with polar packs. Upon receipt, store it immediately at -20 to -70 °C
<b>Stability &amp; Storage</b>	<b>Use a manual defrost freezer and avoid repeated freeze-thaw cycles.</b> <ul style="list-style-type: none"> <li>• 12 months from date of receipt, -20 to -70 °C as supplied.</li> <li>• 1 month, 2 to 8 °C under sterile conditions after reconstitution.</li> <li>• 6 months, -20 to -70 °C under sterile conditions after reconstitution.</li> </ul>

## BACKGROUND

Pax3 belongs to the family of paired box transcription factors. Pax family proteins typically contain a paired box domain and a paired-type homeodomain. These transcription factors play critical roles during fetal development. Human and mouse Pax3 share 98% amino acid sequence identity.