

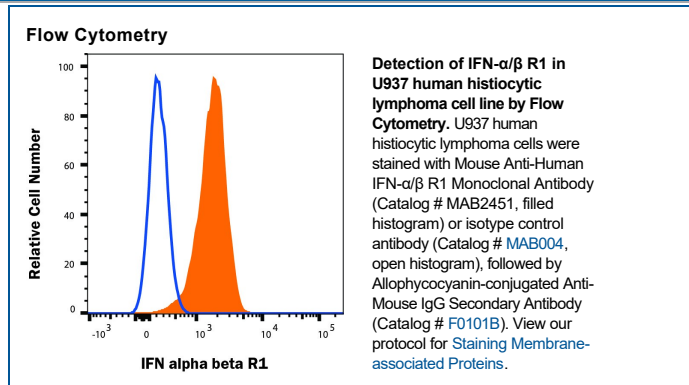
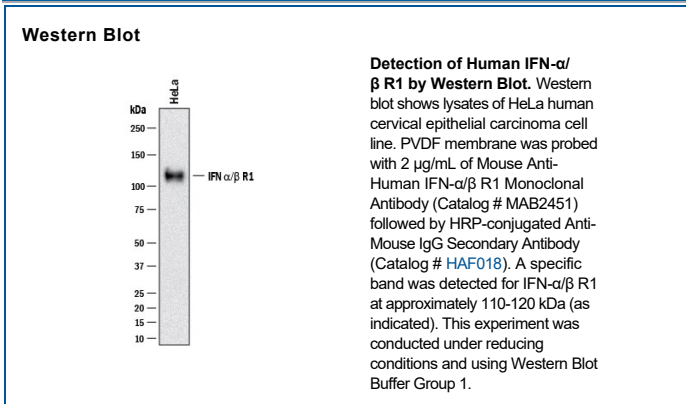
DESCRIPTION	
Species Reactivity	Human
Specificity	Detects human IFN- α/β R1 in direct ELISA.
Source	Monoclonal Mouse IgG _{2B} Clone # 1056928
Purification	Protein A or G purified from hybridoma culture supernatant
Immunogen	<i>S. frugiperda</i> insect ovarian cell line Sf 21-derived recombinant human IFN- α/β R1 Lys28-Lys436 Accession # AAA52730
Formulation	Lyophilized from a 0.2 μ m filtered solution in PBS with Trehalose. See Certificate of Analysis for details. *Small pack size (-SP) is supplied either lyophilized or as a 0.2 μ m filtered solution in PBS.

APPLICATIONS

Please Note: Optimal dilutions should be determined by each laboratory for each application. General Protocols are available in the Technical Information section on our website.

	Recommended Concentration	Sample
Western Blot	2 μ g/mL	HeLa human cervical epithelial carcinoma cell line.
Flow Cytometry	25 μ g/mL	U937 human histiocytic lymphoma cell line

DATA



PREPARATION AND STORAGE

Reconstitution	Reconstitute at 0.5 mg/mL in sterile PBS.
Shipping	The product is shipped at ambient temperature. Upon receipt, store it immediately at the temperature recommended below. *Small pack size (-SP) is shipped with polar packs. Upon receipt, store it immediately at -20 to -70 °C
Stability & Storage	Use a manual defrost freezer and avoid repeated freeze-thaw cycles. <ul style="list-style-type: none"> • 12 months from date of receipt, -20 to -70 °C as supplied. • 1 month, 2 to 8 °C under sterile conditions after reconstitution. • 6 months, -20 to -70 °C under sterile conditions after reconstitution.

BACKGROUND

Type I interferons (IFN- α , IFN- β , IFN- ω) bind to the type I IFN receptor, also called the IFN alpha/beta receptor. This receptor is composed of two chains, IFN- α/β R1 and R2.