

DESCRIPTION

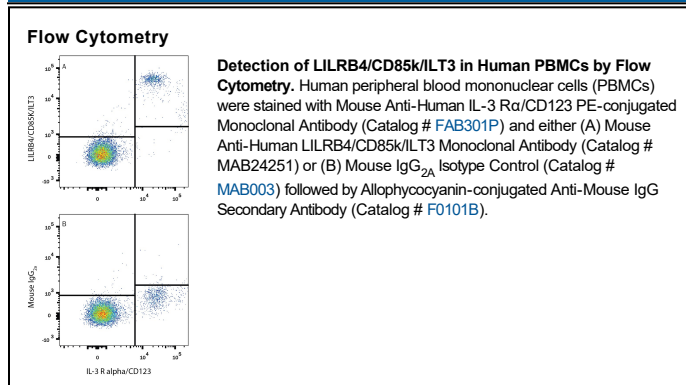
Species Reactivity	Human
Specificity	Detects human LILRB4/CD85k/ILT3 in direct ELISAs and Western blots. In direct ELISAs, approximately 50% cross-reactivity with with recombinant human (rh) ILT5 is observed. No cross-reactivity with rhILT1, rhILT2, rhILT4, rhILT7, rhILT11, rhLIR-6 or rhLIR-8 is observed.
Source	Monoclonal Mouse IgG _{2A} Clone # 293623
Purification	Protein A or G purified from hybridoma culture supernatant
Immunogen	Mouse myeloma cell line NS0-derived recombinant human LILRB4/CD85k/ILT3 Pro17-His257 Accession # ABM86208
Formulation	Lyophilized from a 0.2 µm filtered solution in PBS with Trehalose. See Certificate of Analysis for details. *Small pack size (-SP) is supplied either lyophilized or as a 0.2 µm filtered solution in PBS.

APPLICATIONS

Please Note: Optimal dilutions should be determined by each laboratory for each application. *General Protocols* are available in the *Technical Information* section on our website.

	Recommended Concentration	Sample
Western Blot	1 µg/mL	Recombinant Human LILRB4/CD85k/ILT3 under non-reducing conditions only
Flow Cytometry	0.25 µg/10 ⁶ cells	See Below
CyTOF-ready	Ready to be labeled using established conjugation methods. No BSA or other carrier proteins that could interfere with conjugation.	

DATA



PREPARATION AND STORAGE

Reconstitution	Reconstitute at 0.5 mg/mL in sterile PBS.
Shipping	The product is shipped at ambient temperature. Upon receipt, store it immediately at the temperature recommended below. *Small pack size (-SP) is shipped with polar packs. Upon receipt, store it immediately at -20 to -70 °C
Stability & Storage	Use a manual defrost freezer and avoid repeated freeze-thaw cycles. <ul style="list-style-type: none"> • 12 months from date of receipt, -20 to -70 °C as supplied. • 1 month, 2 to 8 °C under sterile conditions after reconstitution. • 6 months, -20 to -70 °C under sterile conditions after reconstitution.

BACKGROUND

Immunoglobulin-Like Transcript 3 (ILT3), also known as Leukocyte Immunoglobulin-Like Receptor subfamily B member 4 (LILRB4) and Leukocyte Immunoglobulin-like Receptor 5 (LIR-5), is a type I membrane protein that functions as a receptor for class I MHC antigens. It contains cytoplasmic ITIM motifs and is involved in the down-regulation of immune responses.