

DESCRIPTION

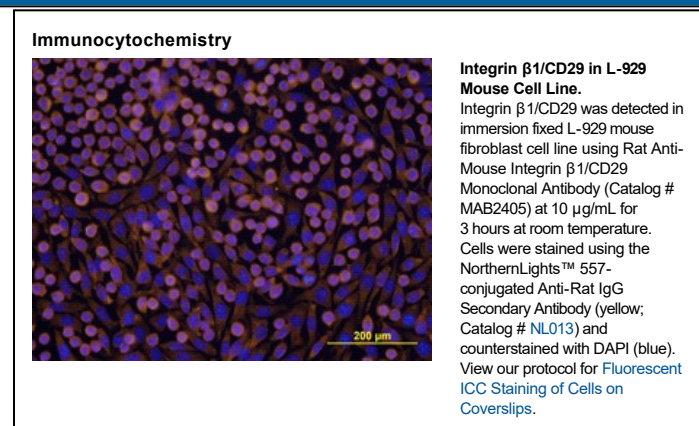
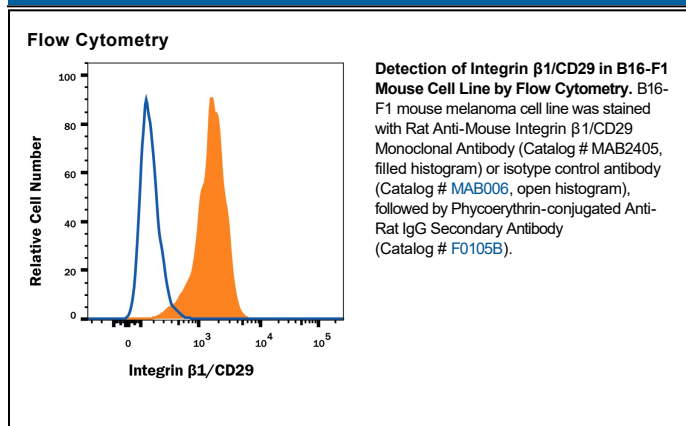
Species Reactivity	Mouse
Specificity	Detects mouse Integrin β 1/CD29 in direct ELISAs and Western blots. In Western blots, no cross-reactivity with recombinant human Integrin β 1, recombinant mouse (rm) Integrin β 2, rmIntegrin β 3, rmIntegrin β 4, or rmIntegrin β 6 is observed.
Source	Monoclonal Rat IgG _{2A} Clone # 265917
Purification	Protein A or G purified from hybridoma culture supernatant
Immunogen	Chinese hamster ovary cell line CHO-derived recombinant mouse Integrin β 1/CD29 Gln21-Asp728 Accession # P09055
Formulation	Lyophilized from a 0.2 μ m filtered solution in PBS with Trehalose. See Certificate of Analysis for details. *Small pack size (-SP) is supplied either lyophilized or as a 0.2 μ m filtered solution in PBS.

APPLICATIONS

Please Note: Optimal dilutions should be determined by each laboratory for each application. *General Protocols* are available in the *Technical Information* section on our website.

	Recommended Concentration	Sample
Western Blot	1 μ g/mL	Recombinant Mouse Integrin β 1/CD29 under non-reducing conditions only
Flow Cytometry	0.25 μ g/10 ⁶ cells	See Below
Immunocytochemistry	8-25 μ g/mL	See Below
Immunohistochemistry	8-25 μ g/mL	Perfusion fixed frozen sections of mouse spinal cord
CyTOF-ready	Ready to be labeled using established conjugation methods. No BSA or other carrier proteins that could interfere with conjugation.	

DATA



PREPARATION AND STORAGE

Reconstitution	Reconstitute at 0.5 mg/mL in sterile PBS.
Shipping	The product is shipped at ambient temperature. Upon receipt, store it immediately at the temperature recommended below. *Small pack size (-SP) is shipped with polar packs. Upon receipt, store it immediately at -20 to -70 °C
Stability & Storage	Use a manual defrost freezer and avoid repeated freeze-thaw cycles. <ul style="list-style-type: none"> ● 12 months from date of receipt, -20 to -70 °C as supplied. ● 1 month, 2 to 8 °C under sterile conditions after reconstitution. ● 6 months, -20 to -70 °C under sterile conditions after reconstitution.

BACKGROUND

The Integrin β 1 subunit, also known as CD29, associates with multiple distinct Integrin α subunits. The Integrin β 1 subunit has a broad tissue distribution with the exception of erythrocytes.