

DESCRIPTION

Species Reactivity	Mouse
Specificity	Detects mouse Integrin $\beta 6$ in direct ELISAs and Western blots.
Source	Monoclonal Rat IgG _{2A} Clone # 268622
Purification	Protein A or G purified from hybridoma culture supernatant
Immunogen	Chinese hamster ovary cell line CHO-derived recombinant mouse Integrin $\beta 6$ Gly22-Asn706 Accession # Q9Z0T9
Formulation	Lyophilized from a 0.2 μ m filtered solution in PBS with Trehalose. See Certificate of Analysis for details. *Small pack size (-SP) is supplied either lyophilized or as a 0.2 μ m filtered solution in PBS.

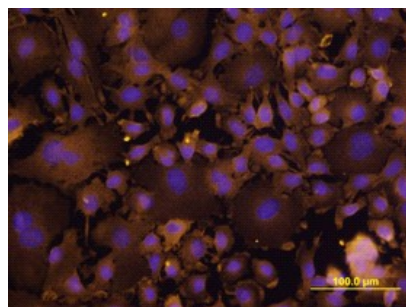
APPLICATIONS

Please Note: Optimal dilutions should be determined by each laboratory for each application. [General Protocols](#) are available in the Technical Information section on our website.

	Recommended Concentration	Sample
Western Blot	1 μ g/mL	Recombinant Mouse Integrin $\beta 6$ under non-reducing conditions only
Immunocytochemistry	8-25 μ g/mL	See Below

DATA

Immunocytochemistry



Integrin $\beta 6$ in XB2 Mouse Cell Line. Integrin $\beta 6$ was detected in immersion fixed XB2 mouse teratoma keratinocyte cell line using Rat Anti-Mouse Integrin $\beta 6$ Monoclonal Antibody (Catalog # MAB2389) at 10 μ g/mL for 3 hours at room temperature. Cells were stained using the NorthernLights™ 557-conjugated Anti-Rat IgG Secondary Antibody (yellow; Catalog # NL013) and counterstained with DAPI (blue). View our protocol for [Fluorescent ICC Staining of Cells on Coverslips](#).

PREPARATION AND STORAGE

Reconstitution	Reconstitute at 0.5 mg/mL in sterile PBS.
Shipping	The product is shipped at ambient temperature. Upon receipt, store it immediately at the temperature recommended below. *Small pack size (-SP) is shipped with polar packs. Upon receipt, store it immediately at -20 to -70 °C
Stability & Storage	Use a manual defrost freezer and avoid repeated freeze-thaw cycles. <ul style="list-style-type: none"> 12 months from date of receipt, -20 to -70 °C as supplied. 1 month, 2 to 8 °C under sterile conditions after reconstitution. 6 months, -20 to -70 °C under sterile conditions after reconstitution.

BACKGROUND

Integrin $\beta 6$ is a type I transmembrane Integrin β subunit that heterodimerizes with αV subunits in the epithelial restricted integrin $\alpha V/\beta 6$. The extracellular domain of mouse Integrin $\beta 6$ contains a collagen binding von-Willebrand factor A domain and multiple truncated EGF-like motifs. Mouse Integrin $\beta 6$ extracellular domain shares 96% and 91% amino acid sequence identity with the corresponding regions of the rat and human protein, respectively.