

## DESCRIPTION

<b>Species Reactivity</b>	Human
<b>Specificity</b>	Detects human CD25/IL-2 R $\alpha$ in direct ELISAs and Western blots. In direct ELISAs and Western blots, less than 4% cross-reactivity with recombinant human (rh) IL-2 R $\beta$ is observed and no cross-reactivity with rhIL-2 R $\gamma$ , rhIL-1 RI, rhIL-1 RII, rhIL-4 R, rhIL-5 R $\alpha$ , rhIL-6 R, rhIL-7 R, rhIL-9 R, and rhIL-10 R is observed.
<b>Source</b>	Monoclonal Mouse IgG <sub>1</sub> Clone # 22722
<b>Purification</b>	Protein A or G purified from ascites
<b>Immunogen</b>	<i>S. frugiperda</i> insect ovarian cell line Sf21-derived recombinant human CD25/IL-2 R $\alpha$ Glu22-Cys213 Accession # P01589
<b>Endotoxin Level</b>	<0.10 EU per 1 $\mu$ g of the antibody by the LAL method.
<b>Formulation</b>	Lyophilized from a 0.2 $\mu$ m filtered solution in PBS with Trehalose. See Certificate of Analysis for details. *Small pack size (-SP) is supplied as a 0.2 $\mu$ m filtered solution in PBS.

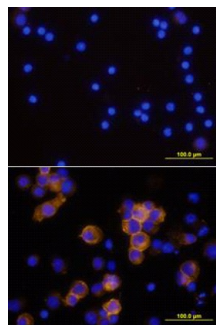
## APPLICATIONS

**Please Note:** Optimal dilutions should be determined by each laboratory for each application. *General Protocols* are available in the *Technical Information* section on our website.

	Recommended Concentration	Sample
<b>Western Blot</b>	1 $\mu$ g/mL	Recombinant Human CD25/IL-2 R $\alpha$ (Catalog # 223-2A) under non-reducing conditions only
<b>Immunocytochemistry</b>	8-25 $\mu$ g/mL	See Below
<b>Immunohistochemistry</b>	8-25 $\mu$ g/mL	Immersion fixed frozen sections of human lymph node
<b>Neutralization</b>	Measured by its ability to neutralize IL-2-induced proliferation in the N1186 human T cell line. The Neutralization Dose (ND <sub>50</sub> ) is typically 0.5-1.0 $\mu$ g/mL in the presence of 1 ng/mL Recombinant Human IL-2.	

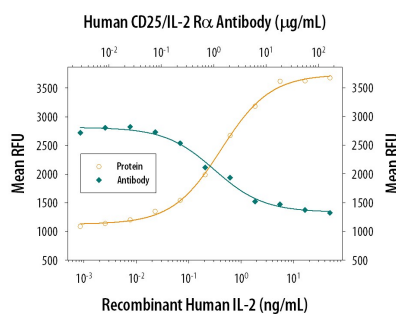
## DATA

### Immunocytochemistry



**CD25/IL-2 R $\alpha$  in Human PBMCs.** CD25/IL-2 R $\alpha$  was detected in immersion fixed human peripheral blood mononuclear cells (PBMCs) stimulated with PHA and monensin using Mouse Anti-Human CD25/IL-2 R $\alpha$  Monoclonal Antibody (Catalog # MAB223) at 10  $\mu$ g/mL for 3 hours at room temperature. Cells were stained using the NorthernLights™ 557-conjugated Anti-Mouse IgG Secondary Antibody (yellow; Catalog # NL007) and counterstained with DAPI (blue). View our protocol for [Fluorescent ICC Staining of Non-adherent Cells](#).

### Neutralization



**Cell Proliferation Induced by IL-2 and Neutralization by Human CD25/IL-2 R $\alpha$  Antibody.** Recombinant Human IL-2 (Catalog # 202-IL) stimulates proliferation in the N1186 human T cell line in a dose-dependent manner (orange line). Proliferation elicited by Recombinant Human IL-2 (1 ng/mL) is neutralized (green line) by increasing concentrations of Mouse Anti-Human CD25/IL-2 R $\alpha$  Monoclonal Antibody (Catalog # MAB223). The ND<sub>50</sub> is typically 0.5-1.0  $\mu$ g/mL.

## PREPARATION AND STORAGE

<b>Reconstitution</b>	Reconstitute at 0.5 mg/mL in sterile PBS.
<b>Shipping</b>	The product is shipped at ambient temperature. Upon receipt, store it immediately at the temperature recommended below. *Small pack size (-SP) is shipped with polar packs. Upon receipt, store it immediately at -20 to -70 °C
<b>Stability &amp; Storage</b>	<b>Use a manual defrost freezer and avoid repeated freeze-thaw cycles.</b> <ul style="list-style-type: none"> <li>• 12 months from date of receipt, -20 to -70 °C as supplied.</li> <li>• 1 month, 2 to 8 °C under sterile conditions after reconstitution.</li> <li>• 6 months, -20 to -70 °C under sterile conditions after reconstitution.</li> </ul>

## BACKGROUND

IL-2 R $\alpha$  is a type I transmembrane protein that associates with IL-2 R $\beta$  and the common  $\gamma$  chain to form a high affinity heterotrimeric receptor complex for IL-2. A soluble form of IL-2 R $\alpha$  has been detected in serum.