

DESCRIPTION

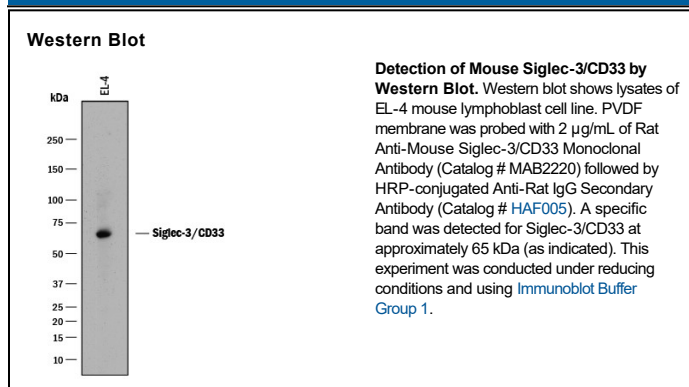
Species Reactivity	Mouse
Specificity	Detects mouse Siglec-3/CD33 in direct ELISAs.
Source	Monoclonal Rat IgG _{2B} Clone # 925763
Purification	Protein A or G purified from hybridoma culture supernatant
Immunogen	<i>S. frugiperda</i> insect ovarian cell line Sf 21-derived recombinant mouse Siglec-3/CD33 Gln17-Val244 Accession # Q63994
Formulation	Lyophilized from a 0.2 µm filtered solution in PBS with Trehalose. See Certificate of Analysis for details. *Small pack size (-SP) is supplied either lyophilized or as a 0.2 µm filtered solution in PBS.

APPLICATIONS

Please Note: Optimal dilutions should be determined by each laboratory for each application. *General Protocols* are available in the *Technical Information* section on our website.

	Recommended Concentration	Sample
Western Blot	2 µg/mL	See Below

DATA



PREPARATION AND STORAGE

Reconstitution	Reconstitute at 0.5 mg/mL in sterile PBS.
Shipping	The product is shipped at ambient temperature. Upon receipt, store it immediately at the temperature recommended below. *Small pack size (-SP) is shipped with polar packs. Upon receipt, store it immediately at -20 to -70 °C
Stability & Storage	Use a manual defrost freezer and avoid repeated freeze-thaw cycles. <ul style="list-style-type: none"> ● 12 months from date of receipt, -20 to -70 °C as supplied. ● 1 month, 2 to 8 °C under sterile conditions after reconstitution. ● 6 months, -20 to -70 °C under sterile conditions after reconstitution.

BACKGROUND

Siglecs (Sialic acid binding Ig-like Lectins) are I-type (Ig-type) cell-surface lectins that recognize sialic acid within specific glycan structures. Mouse Siglec-3, also known as CD33 and GP67, is expressed primarily on myeloid precursors in the bone marrow and on granulocytes in peripheral blood. Two isoforms have been reported for mouse Siglec-3 that display distinct cytoplasmic domains resulting from differential mRNA splicing.