

DESCRIPTION

Species Reactivity	Human/Mouse/Rat
Specificity	Detects human NF-L in direct ELISAs. Detects human, mouse, and rat NF-L in Western blots.
Source	Monoclonal Mouse IgG _{2B} Clone # 1002615
Purification	Protein A or G purified from hybridoma culture supernatant
Immunogen	68kD purified NF-L from Bovine spinal cord.
Formulation	Lyophilized from a 0.2 µm filtered solution in PBS with Trehalose. See Certificate of Analysis for details. *Small pack size (-SP) is supplied either lyophilized or as a 0.2 µm filtered solution in PBS.

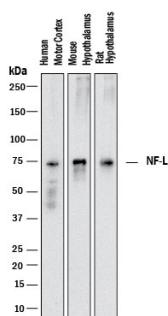
APPLICATIONS

Please Note: Optimal dilutions should be determined by each laboratory for each application. General Protocols are available in the Technical Information section on our website.

	Recommended Concentration	Sample
Western Blot	2 µg/mL	See Below
Immunohistochemistry	1-25 µg/mL	See Below

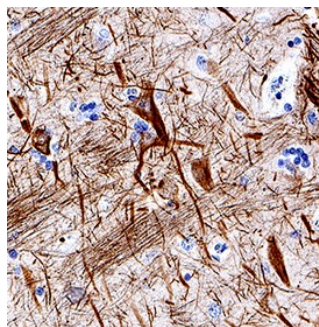
DATA

Western Blot



Detection of Human, Mouse, and Rat NF-L by Western Blot. Western blot shows lysates of human motor cortex tissue, mouse hypothalamus tissue, and rat hypothalamus tissue. PVDF membrane was probed with 2 µg/mL of Mouse Anti-Human/Mouse/Rat NF-L Monoclonal Antibody (Catalog # MAB22163) followed by HRP-conjugated Anti-Mouse IgG Secondary Antibody (Catalog # HAF018). A specific band was detected for NF-L at approximately 68 kDa (as indicated). This experiment was conducted under reducing conditions and using Immunoblot Buffer Group 1.

Immunohistochemistry



NF-L in Human Brain. NF-L was detected in immersion fixed paraffin-embedded sections of human brain (hippocampus) using Mouse Anti-Human/Mouse/Rat NF-L Monoclonal Antibody (Catalog # MAB22163) at 1.7 µg/mL for 1 hour at room temperature followed by incubation with the Anti-Mouse IgG VisUCyte™ HRP Polymer Antibody (Catalog # VC001). Before incubation with the primary antibody, tissue was subjected to heat-induced epitope retrieval using Antigen Retrieval Reagent-Basic (Catalog # CTS013). Tissue was stained using DAB (brown) and counterstained with hematoxylin (blue). Specific staining was localized to neuronal cell bodies and processes. View our protocol for IHC Staining with VisUCyte HRP Polymer Detection Reagents.

PREPARATION AND STORAGE

Reconstitution	Reconstitute at 0.5 mg/mL in sterile PBS.
Shipping	The product is shipped at ambient temperature. Upon receipt, store it immediately at the temperature recommended below. *Small pack size (-SP) is shipped with polar packs. Upon receipt, store it immediately at -20 to -70 °C
Stability & Storage	Use a manual defrost freezer and avoid repeated freeze-thaw cycles. <ul style="list-style-type: none"> • 12 months from date of receipt, -20 to -70 °C as supplied. • 1 month, 2 to 8 °C under sterile conditions after reconstitution. • 6 months, -20 to -70 °C under sterile conditions after reconstitution.

BACKGROUND

NF-L is a 68 kDa light chain cytoskeletal intermediate filament protein that is expressed in neurons. It associates with the 125 kDa NF-M and the 200 kDa NF-H to form neurofilaments.