

DESCRIPTION

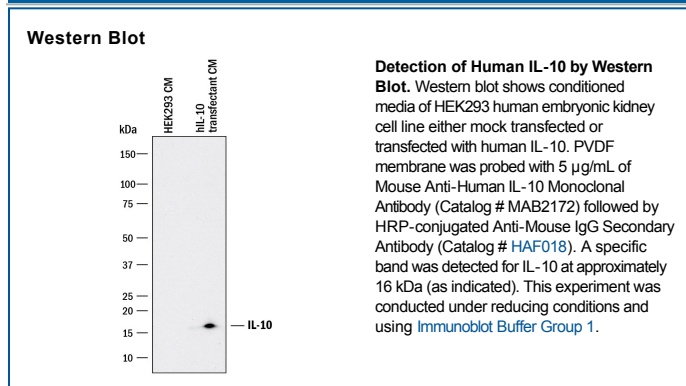
Species Reactivity	Human
Specificity	Detects human IL-10 in ELISAs. In sandwich immunoassays, less than 5% cross-reactivity with recombinant equine IL-10 is observed and less than 0.5% cross-reactivity with recombinant canine IL-10, recombinant mouse IL-10, recombinant rat IL-10, recombinant porcine IL-10, recombinant cotton rat IL-10, and recombinant feline IL-10 is observed.
Source	Monoclonal Mouse IgG ₁ Clone # 127107
Purification	Protein A or G purified from hybridoma culture supernatant
Immunogen	<i>S. frugiperda</i> insect ovarian cell line Sf 21-derived recombinant human IL-10 Ser19-Asn178 Accession # P22301
Formulation	Lyophilized from a 0.2 µm filtered solution in PBS with Trehalose. See Certificate of Analysis for details. *Small pack size (-SP) is supplied as a 0.2 µm filtered solution in PBS.

APPLICATIONS

Please Note: Optimal dilutions should be determined by each laboratory for each application. *General Protocols* are available in the *Technical Information* section on our website.

	Recommended Concentration	Sample
Western Blot	5 µg/mL	See Below
Human IL-10 Sandwich Immunoassay		Reagent
ELISA Capture	2-8 µg/mL	Human IL-10 Antibody (Catalog # MAB2172)
ELISA Detection	0.1-0.4 µg/mL	Human IL-10 Biotinylated Antibody (Catalog # BAF217)
Standard		Recombinant Human IL-10 (Catalog # 1064-IL)

DATA



PREPARATION AND STORAGE

Reconstitution	Reconstitute at 0.5 mg/mL in sterile PBS.
Shipping	The product is shipped at ambient temperature. Upon receipt, store it immediately at the temperature recommended below. *Small pack size (-SP) is shipped with polar packs. Upon receipt, store it immediately at -20 to -70 °C
Stability & Storage	Use a manual defrost freezer and avoid repeated freeze-thaw cycles. <ul style="list-style-type: none"> • 12 months from date of receipt, -20 to -70 °C as supplied. • 1 month, 2 to 8 °C under sterile conditions after reconstitution. • 6 months, -20 to -70 °C under sterile conditions after reconstitution.

BACKGROUND

Interleukin-10 (IL-10) is a pleiotropic cytokine that can exert either immunostimulatory or immunosuppressive effects on a variety of cell types. It is produced predominantly by Th2 lymphocytes and other activated lymphoid cells.