

DESCRIPTION

Species Reactivity	Human
Specificity	Detects human, mouse, and rat STAT6.
Source	Monoclonal Mouse IgG _{2A} Clone # 253906
Purification	Protein A or G purified from hybridoma culture supernatant
Immunogen	<i>E. coli</i> -derived recombinant human STAT6 Asn341-Gly640 Accession # P42226.1
Formulation	Lyophilized from a 0.2 µm filtered solution in PBS with Trehalose. See Certificate of Analysis for details. *Small pack size (-SP) is supplied either lyophilized or as a 0.2 µm filtered solution in PBS.

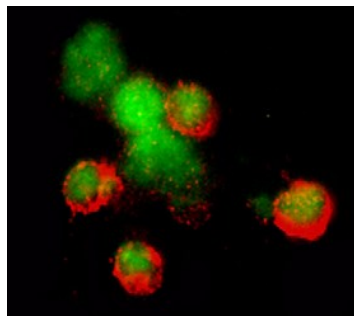
APPLICATIONS

Please Note: Optimal dilutions should be determined by each laboratory for each application. [General Protocols](#) are available in the Technical Information section on our website.

	Recommended Concentration	Sample
Western Blot	2 µg/mL	See Below
Immunocytochemistry	8-25 µg/mL	See Below
Intracellular Staining by Flow Cytometry	2.5 µg/10 ⁶ cells	Jurkat human acute T cell leukemia cell line fixed with paraformaldehyde and permeabilized with methanol
CyTOF-ready	Ready to be labeled using established conjugation methods. No BSA or other carrier proteins that could interfere with conjugation.	

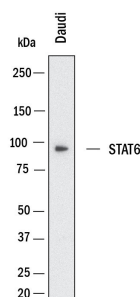
DATA

Immunocytochemistry



STAT6 in Human PBMCs.
STAT6 was detected in immersion fixed PHA-stimulated human peripheral blood mononuclear cells (PBMCs) using 8 µg/mL Mouse Anti-Human STAT6 Monoclonal Antibody (Catalog # MAB2167) for 3 hours at room temperature. Cells were stained (red) and counterstained (green). View our protocol for [Fluorescent ICC Staining of Non-adherent Cells](#).

Western Blot



Detection of Human STAT6 by Western Blot. Western Blot shows lysates of Daudi human Burkitt's lymphoma cell line. PVDF membrane was probed with 2 µg/ml of Mouse Anti-Human STAT6 Monoclonal Antibody (Catalog # MAB2167) followed by HRP-conjugated Anti-Mouse IgG Secondary Antibody (Catalog # HAF018). A specific band was detected for STAT6 at approximately 100 kDa (as indicated). This experiment was conducted under reducing conditions and using [Western Blot Buffer Group 1](#).

PREPARATION AND STORAGE

Reconstitution	Reconstitute at 0.5 mg/mL in sterile PBS. For liquid material, refer to CoA for concentration.
Shipping	Lyophilized product is shipped at ambient temperature. Liquid small pack size (-SP) is shipped with polar packs. Upon receipt, store immediately at the temperature recommended below.
Stability & Storage	Use a manual defrost freezer and avoid repeated freeze-thaw cycles. <ul style="list-style-type: none"> 12 months from date of receipt, -20 to -70 °C as supplied. 1 month, 2 to 8 °C under sterile conditions after reconstitution. 6 months, -20 to -70 °C under sterile conditions after reconstitution.

BACKGROUND

STAT family proteins mediate cytokine signaling by acting as signal transducers in the cytoplasm and transcription activators in the nucleus. STAT6 is important for the development of Th2 cells and regulation of gene expression induced by IL-4 and IL-13.