

#### DESCRIPTION

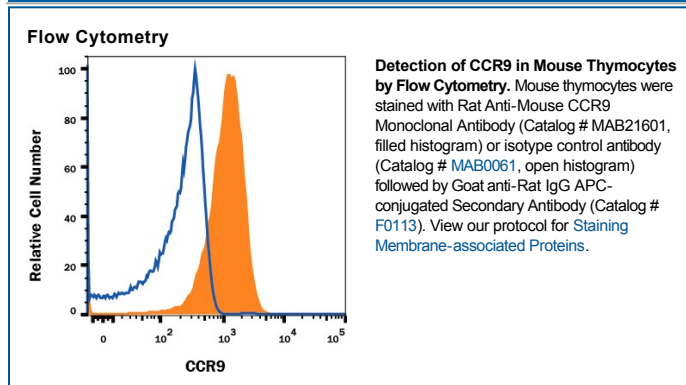
|                           |   |
|---------------------------|---|
| <b>Species Reactivity</b> | Mouse   |
| <b>Specificity</b>        | Detects mouse CCR9 in direct ELISAs.  |
| <b>Source</b>             | Recombinant Monoclonal Rat IgG <sub>2B</sub> Clone # 242503R  |
| <b>Purification</b>       | Protein A or G purified from cell culture supernatant   |
| <b>Immunogen</b>          | Y3 rat myeloid cell line transfected with mouse CCR9<br>Met1-Leu369<br>Accession # Q9WUT7   |
| <b>Formulation</b>        | Lyophilized from a 0.2 µm filtered solution in PBS with Trehalose. See Certificate of Analysis for details.<br>*Small pack size (-SP) is supplied either lyophilized or as a 0.2 µm filtered solution in PBS. |

#### APPLICATIONS

**Please Note:** Optimal dilutions should be determined by each laboratory for each application. *General Protocols* are available in the *Technical Information* section on our website.

|                       | <b>Recommended Concentration</b>   | <b>Sample</b> |
|-----------------------|--|---------------|
| <b>Flow Cytometry</b> | 0.25 µg/10 <sup>6</sup> cells  | See Below     |
| <b>CyTOF-ready</b>    | Ready to be labeled using established conjugation methods. No BSA or other carrier proteins that could interfere with conjugation. |               |

#### DATA



#### PREPARATION AND STORAGE

|                                |  |
|--------------------------------|--|
| <b>Reconstitution</b>          | Reconstitute at 0.5 mg/mL in sterile PBS.  |
| <b>Shipping</b>                | The product is shipped at ambient temperature. Upon receipt, store it immediately at the temperature recommended below.<br>*Small pack size (-SP) is shipped with polar packs. Upon receipt, store it immediately at -20 to -70 °C   |
| <b>Stability &amp; Storage</b> | <b>Use a manual defrost freezer and avoid repeated freeze-thaw cycles.</b> <ul style="list-style-type: none"> <li>● 12 months from date of receipt, -20 to -70 °C as supplied.</li> <li>● 1 month, 2 to 8 °C under sterile conditions after reconstitution.</li> <li>● 6 months, -20 to -70 °C under sterile conditions after reconstitution.</li> </ul> |

#### BACKGROUND

CCR9 is a G protein-linked seven transmembrane domain chemokine receptor that serves as a receptor for CCL25/TECK. CCR9 is expressed on mature and immature thymocytes and some peripheral T and B cells.