

DESCRIPTION

Species Reactivity	Human
Specificity	Detects human Laminin alpha 2 in direct ELISAs.
Source	Monoclonal Mouse IgG _{2A} Clone # 1003531
Purification	Protein A or G purified from hybridoma culture supernatant
Immunogen	Chinese Hamster Ovary cell line, CHO-derived human Laminin alpha 2 Lys2145-Asn3122 Accession # P24043
Formulation	Lyophilized from a 0.2 µm filtered solution in PBS with Trehalose. See Certificate of Analysis for details. *Small pack size (-SP) is supplied either lyophilized or as a 0.2 µm filtered solution in PBS.

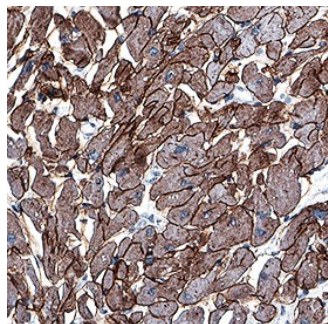
APPLICATIONS

Please Note: Optimal dilutions should be determined by each laboratory for each application. [General Protocols](#) are available in the [Technical Information](#) section on our website.

	Recommended Concentration	Sample
Immunocytochemistry	8-25 µg/mL	See Below
Immunohistochemistry	5-25 µg/mL	See Below

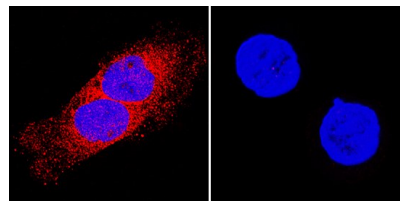
DATA

Immunohistochemistry



Laminin alpha 2 in Human Heart. Laminin alpha 2 was detected in immersion fixed paraffin-embedded sections of human heart using Mouse Anti-Human Laminin alpha 2 Monoclonal Antibody (Catalog # MAB2143) at 5 µg/mL for 1 hour at room temperature followed by incubation with the Anti-Mouse IgG VisUCyte™ HRP Polymer Antibody (Catalog # VC001). Before incubation with the primary antibody, tissue was subjected to heat-induced epitope retrieval using Antigen Retrieval Reagent-Basic (Catalog # CTS013). Tissue was stained using DAB (brown) and counterstained with hematoxylin (blue). Specific staining was localized to cell membranes in cardiomyocytes. View our protocol for [IHC Staining with VisUCyte HRP Polymer Detection Reagents](#).

Immunocytochemistry



Laminin alpha 2 in U2OS and MCF-7 Human Cell Lines. Laminin alpha 2 was detected in immersion fixed U2OS human osteosarcoma cell line (positive stain) and MCF-7 human breast cancer cell line (negative stain) using Mouse Anti-Human Laminin alpha 2 Monoclonal Antibody (Catalog # MAB2143) at 8 µg/mL for 3 hours at room temperature. Cells were stained using the NorthernLights™ 557-conjugated Anti-Mouse IgG Secondary Antibody (red; Catalog # NL007) and counterstained with DAPI (blue). Specific staining was localized to cytoplasm. View our protocol for [Fluorescent ICC Staining of Cells on Coverslips](#).

PREPARATION AND STORAGE

Reconstitution	Reconstitute at 0.5 mg/mL in sterile PBS.
Shipping	The product is shipped at ambient temperature. Upon receipt, store it immediately at the temperature recommended below. *Small pack size (-SP) is shipped with polar packs. Upon receipt, store it immediately at -20 to -70 °C
Stability & Storage	Use a manual defrost freezer and avoid repeated freeze-thaw cycles. <ul style="list-style-type: none"> • 12 months from date of receipt, -20 to -70 °C as supplied. • 1 month, 2 to 8 °C under sterile conditions after reconstitution. • 6 months, -20 to -70 °C under sterile conditions after reconstitution.

BACKGROUND

Laminin subunit alpha-2 (LAMA-2) is an extracellular matrix protein that is a main component of the basement membrane. It is thought to mediate the attachment, migration and organization of cells during embryonic development via interacting with other components with the extracellular matrix. It is widely expressed except in the liver, thymus and bone.