

## DESCRIPTION

<b>Species Reactivity</b>	Human/Rat
<b>Specificity</b>	Detects human and rat Laminin $\gamma$ 1.
<b>Source</b>	Monoclonal Mouse IgG <sub>2A</sub> Clone # D18
<b>Purification</b>	Protein A or G purified from hybridoma culture supernatant
<b>Immunogen</b>	Rat glomerular basement membrane
<b>Formulation</b>	Lyophilized from a 0.2 $\mu$ m filtered solution in PBS with Trehalose. See Certificate of Analysis for details. *Small pack size (-SP) is supplied either lyophilized or as a 0.2 $\mu$ m filtered solution in PBS.

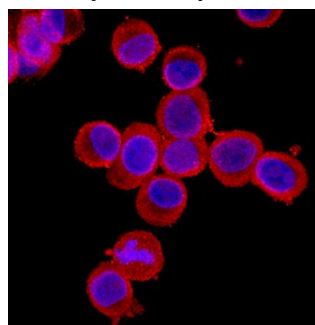
## APPLICATIONS

**Please Note:** Optimal dilutions should be determined by each laboratory for each application. [General Protocols](#) are available in the Technical Information section on our website.

	<b>Recommended Concentration</b>	<b>Sample</b>
<b>Immunocytochemistry</b>	8-25 $\mu$ g/mL	See Below
<b>Western Blot</b>	Green, T.L. <i>et al.</i> (1992) J. Biol. Chem. <b>267</b> :2014. This application was not tested by R&D Systems.	
<b>Immunoprecipitation</b>	Green, T.L. <i>et al.</i> (1992) J. Biol. Chem. <b>267</b> :2014.	

## DATA

### Immunocytochemistry



**Laminin  $\gamma$ 1 in LS180 Human Cell Line.**  
Laminin  $\gamma$ 1 was detected in immersion fixed LS180 human colorectal adenocarcinoma cell line using Mouse Anti-Human/Rat Laminin  $\gamma$ 1 Monoclonal Antibody (Catalog # MAB2139) at 10  $\mu$ g/mL for 3 hours at room temperature. Cells were stained using the NorthernLights™ 557-conjugated Anti-Mouse IgG Secondary Antibody (red; Catalog # NL007) and counterstained with DAPI (blue). Specific staining was localized to cytoplasm. View our protocol for [Fluorescent ICC Staining of Cells on Coverslips](#).

## PREPARATION AND STORAGE

<b>Reconstitution</b>	Reconstitute at 0.5 mg/mL in sterile PBS.
<b>Shipping</b>	The product is shipped at ambient temperature. Upon receipt, store it immediately at the temperature recommended below. *Small pack size (-SP) is shipped with polar packs. Upon receipt, store it immediately at -20 to -70 °C
<b>Stability &amp; Storage</b>	<b>Use a manual defrost freezer and avoid repeated freeze-thaw cycles.</b> <ul style="list-style-type: none"> <li>12 months from date of receipt, -20 to -70 °C as supplied.</li> <li>1 month, 2 to 8 °C under sterile conditions after reconstitution.</li> <li>6 months, -20 to -70 °C under sterile conditions after reconstitution.</li> </ul>

## BACKGROUND

Laminins are heterotrimeric, noncollagenous glycoproteins composed of alpha, beta and gamma chains. Through interactions with integrins, dystroglycan and other receptors, laminins contribute to cell differentiation, cell shape and migration, and maintenance of tissue phenotypes and survival (1). Laminin  $\gamma$ 1, also known as Laminin B2, is the gamma subunit of Laminin-1 (EHS laminin), Laminin-2 (merosin), Laminin-3 (S-laminin), Laminin-4 (S-merosin), Laminin-6 (K-laminin) and Laminin-7 (KS-laminin).

### References:

1. Colognato, H. *et al.* (2000) Dev. Dyn. **218**:213.