

DESCRIPTION

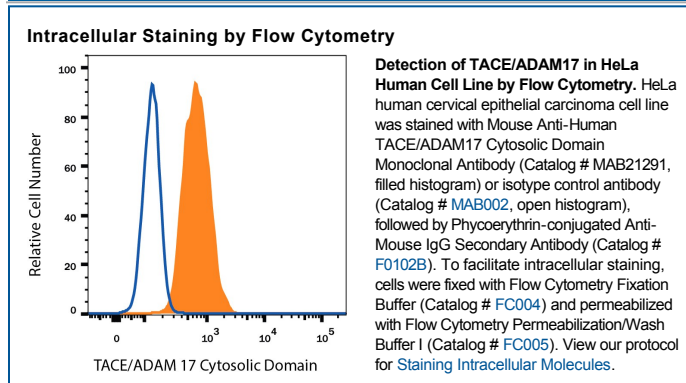
Species Reactivity	Human
Specificity	Detects human TACE/ADAM17 Cytosolic Domain in direct ELISAs and Western blots. In direct ELISAs, no cross-reactivity with recombinant human ADAM33 is observed.
Source	Monoclonal Mouse IgG ₁ Clone # 136133
Purification	Protein A or G purified from hybridoma culture supernatant
Immunogen	<i>E. coli</i> -derived recombinant human TACE/ADAM17 Asp695-Cys824 Accession # P78536
Formulation	Lyophilized from a 0.2 µm filtered solution in PBS with Trehalose. See Certificate of Analysis for details. *Small pack size (-SP) is supplied as a 0.2 µm filtered solution in PBS.

APPLICATIONS

Please Note: Optimal dilutions should be determined by each laboratory for each application. *General Protocols* are available in the *Technical Information* section on our website.

	Recommended Concentration	Sample
Western Blot	1 µg/mL	Recombinant Human TACE/ADAM17 Cytosolic Domain, Western Blot Standard (Catalog # WBC030)
Immunoprecipitation	25 µg/mL	Conditioned cell culture medium spiked with Recombinant Human TACE/ADAM17 (Catalog # 930-ADB), see our available Western blot detection antibodies
Intracellular Staining by Flow Cytometry	0.25 µg/10 ⁶ cells	See Below
CyTOF-ready	Ready to be labeled using established conjugation methods. No BSA or other carrier proteins that could interfere with conjugation.	

DATA



PREPARATION AND STORAGE

Reconstitution	Reconstitute at 0.5 mg/mL in sterile PBS.
Shipping	The product is shipped at ambient temperature. Upon receipt, store it immediately at the temperature recommended below. *Small pack size (-SP) is shipped with polar packs. Upon receipt, store it immediately at -20 to -70 °C
Stability & Storage	Use a manual defrost freezer and avoid repeated freeze-thaw cycles. <ul style="list-style-type: none"> ● 12 months from date of receipt, -20 to -70 °C as supplied. ● 1 month, 2 to 8 °C under sterile conditions after reconstitution. ● 6 months, -20 to -70 °C under sterile conditions after reconstitution.

BACKGROUND

TACE (also known as ADAM17) is a type I membrane zinc protease of the ADAM family that functions as a major sheddase on the cell surface.