

DESCRIPTION

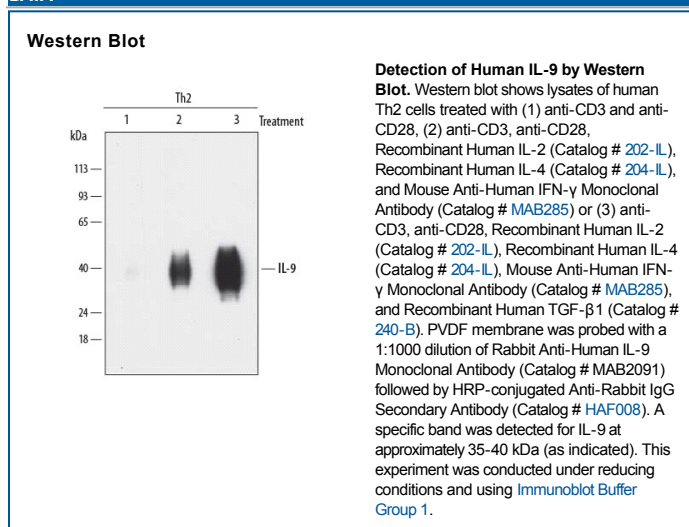
Species Reactivity	Human
Specificity	Detects human IL-9 in Western blots.
Source	Recombinant Monoclonal Rabbit IgG Clone # 1043G
Purification	Protein A or G purified from cell culture supernatant
Immunogen	<i>S. frugiperda</i> insect ovarian cell line Sf 21-derived recombinant human IL-9 Gln19-Ile144 Accession # P15248
Formulation	Supplied as a solution in PBS containing BSA, Glycerol and Sodium Azide. See Certificate of Analysis for details. *Small pack size (-SP) is supplied as a 0.2 µm filtered solution in PBS.

APPLICATIONS

Please Note: Optimal dilutions should be determined by each laboratory for each application. *General Protocols* are available in the *Technical Information* section on our website.

	Recommended Concentration	Sample
Western Blot	1:1000 dilution	See Below

DATA



PREPARATION AND STORAGE

Shipping	The product is shipped with polar packs. Upon receipt, store it immediately at the temperature recommended below. *Small pack size (-SP) is shipped with polar packs. Upon receipt, store it immediately at -20 to -70 °C
Stability & Storage	<ul style="list-style-type: none"> ● 12 months from date of receipt, -20 °C as supplied. ● 1 month, 2 to 8 °C under sterile conditions after opening. ● 6 months, -20 °C under sterile conditions after opening.

BACKGROUND

Interleukin-9 (IL-9) is a heavily glycosylated cytokine with a 14 kDa peptide backbone that is secreted by CD4⁺ Th2 cells. It supports the growth of multiple hematopoietic cell types including Th cells, germinal center B cells, macrophages, mast cells, neutrophils, megakaryocytes, and erythrocytes. IL-9 exerts its biological effects through a receptor complex composed of IL-9 R and the common gamma chain. Mature human IL-9 shares 57% amino acid sequence identity with mouse and rat IL-9.

PRODUCT SPECIFIC NOTICES

* Contains <0.1% Sodium Azide, which is not hazardous at this concentration according to GHS classifications. Refer to SDS for additional information and handling instructions.