

DESCRIPTION

Species Reactivity	Human
Specificity	Detects human Cathepsin F in direct ELISAs and Western blots. In direct ELISAs, no cross-reactivity with recombinant human Cathepsin B, C, L, O, S, V, X/Z/P, recombinant mouse Cathepsin F, or H is observed.
Source	Monoclonal Mouse IgG ₁ Clone # 237208
Purification	Protein A or G purified from hybridoma culture supernatant
Immunogen	Mouse myeloma cell line NS0-derived recombinant human Cathepsin F Ala20-Asp484 Accession # NP_003784
Formulation	Lyophilized from a 0.2 µm filtered solution in PBS with Trehalose. See Certificate of Analysis for details. *Small pack size (-SP) is supplied as a 0.2 µm filtered solution in PBS.

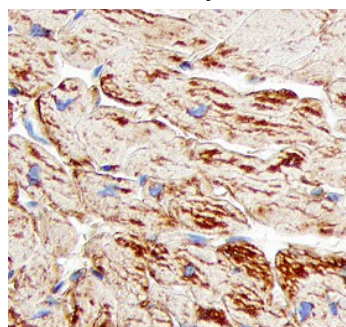
APPLICATIONS

Please Note: Optimal dilutions should be determined by each laboratory for each application. *General Protocols* are available in the *Technical Information* section on our website.

	Recommended Concentration	Sample
Western Blot	1 µg/mL	Recombinant Human Cathepsin F
Immunohistochemistry	8-25 µg/mL	See Below
Immunoprecipitation	25 µg/mL	Conditioned cell culture medium spiked with Recombinant Human Cathepsin F, see our available Western blot detection antibodies

DATA

Immunohistochemistry



Cathepsin F in Human Heart.

Cathepsin F was detected in formalin fixed paraffin-embedded sections of human heart using 8 µg/mL Mouse Anti-Human Cathepsin F Monoclonal Antibody (Catalog # MAB2075) overnight at 4 °C. Tissue was stained with the Anti-Mouse HRP-DAB Cell & Tissue Staining Kit (brown; Catalog # CTS002) and counterstained with hematoxylin (blue). View our protocol for [Chromogenic IHC Staining of Paraffin-embedded Tissue Sections](#).

PREPARATION AND STORAGE

Reconstitution	Reconstitute at 0.5 mg/mL in sterile PBS.
Shipping	The product is shipped at ambient temperature. Upon receipt, store it immediately at the temperature recommended below. *Small pack size (-SP) is shipped with polar packs. Upon receipt, store it immediately at -20 to -70 °C
Stability & Storage	Use a manual defrost freezer and avoid repeated freeze-thaw cycles. <ul style="list-style-type: none"> ● 12 months from date of receipt, -20 to -70 °C as supplied. ● 1 month, 2 to 8 °C under sterile conditions after reconstitution. ● 6 months, -20 to -70 °C under sterile conditions after reconstitution.

BACKGROUND

Cathepsin F is a lysosomal cysteine protease that participates in protein degradation and has been implicated in tumor progression.