

DESCRIPTION

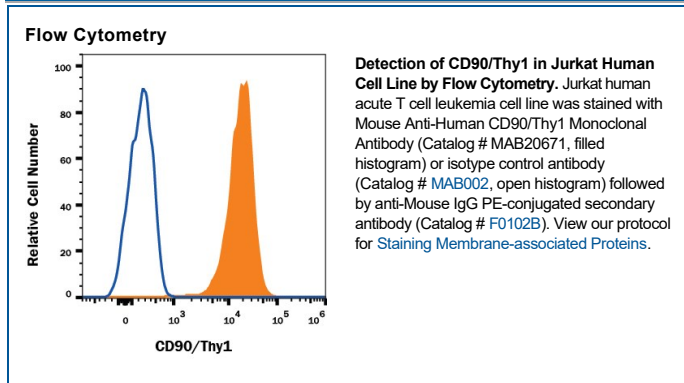
Species Reactivity	Human
Specificity	Detects human CD90/THY1 in direct ELISAs.
Source	Monoclonal Mouse IgG _{2A} Clone # 783922
Purification	Protein A or G purified from hybridoma culture supernatant
Immunogen	Chinese Hamster Ovary cell line, CHO-derived human CD90/THY1 Met1-Ser141 Accession # P04216
Formulation	Lyophilized from a 0.2 µm filtered solution in PBS with Trehalose. See Certificate of Analysis for details. *Small pack size (-SP) is supplied either lyophilized or as a 0.2 µm filtered solution in PBS.

APPLICATIONS

Please Note: Optimal dilutions should be determined by each laboratory for each application. [General Protocols](#) are available in the Technical Information section on our website.

	Recommended Concentration	Sample
Flow Cytometry	0.25 µg/10 ⁶ cells	See Below
CyTOF-ready	Ready to be labeled using established conjugation methods. No BSA or other carrier proteins that could interfere with conjugation.	

DATA



PREPARATION AND STORAGE

Reconstitution	Reconstitute at 0.5 mg/mL in sterile PBS.
Shipping	The product is shipped at ambient temperature. Upon receipt, store it immediately at the temperature recommended below. *Small pack size (-SP) is shipped with polar packs. Upon receipt, store it immediately at -20 to -70 °C
Stability & Storage	Use a manual defrost freezer and avoid repeated freeze-thaw cycles. <ul style="list-style-type: none"> • 12 months from date of receipt, -20 to -70 °C as supplied. • 1 month, 2 to 8 °C under sterile conditions after reconstitution. • 6 months, -20 to -70 °C under sterile conditions after reconstitution.

BACKGROUND

CD90, also known as Thy1, is a GPI-linked glycoprotein expressed by endothelial cells, hematopoietic stem cells, and in developing nervous tissue. Unlike human CD90, mouse CD90 is also highly expressed on T cells and is involved in T cell activation. Over the mature region of CD90, human CD90 shares 63% amino acid identity with mouse CD90/Thy1.