

DESCRIPTION

Species Reactivity	Human
Specificity	Detects human CD68/SR-D1 in direct ELISAs.
Source	Monoclonal Mouse IgG _{2B} Clone # 298807
Purification	Protein A or G purified from hybridoma culture supernatant
Immunogen	Mouse myeloma cell line NS0-derived recombinant human CD68/SR-D1 Asn22-Ile320 Accession # AAB25811
Formulation	Lyophilized from a 0.2 µm filtered solution in PBS with Trehalose. See Certificate of Analysis for details. *Small pack size (-SP) is supplied either lyophilized or as a 0.2 µm filtered solution in PBS.

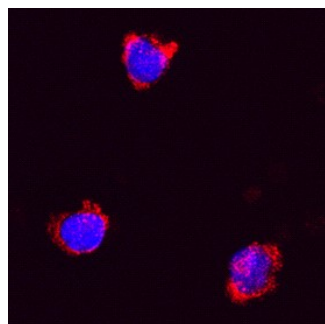
APPLICATIONS

Please Note: Optimal dilutions should be determined by each laboratory for each application. *General Protocols* are available in the *Technical Information* section on our website.

	Recommended Concentration	Sample
Immunocytochemistry	8-25 µg/mL	See Below
Intracellular Staining by Flow Cytometry	2.5 µg/10 ⁶ cells	U937 human histiocytic lymphoma cell line fixed with paraformaldehyde and permeabilized with methanol
CyTOF-ready	Ready to be labeled using established conjugation methods. No BSA or other carrier proteins that could interfere with conjugation.	

DATA

Immunocytochemistry



CD68/SR-D1 in Human PBMCs.

CD68/SR-D1 was detected in immersion fixed human peripheral blood mononuclear cells (PBMCs) stimulated with PHA using Human CD68/SR-D1 Monoclonal Antibody (Catalog # MAB20401) at 25 µg/mL for 3 hours at room temperature. Cells were stained using the NorthernLights™ 557-conjugated Anti-Mouse IgG Secondary Antibody (red; Catalog # NL007) and counterstained with DAPI (blue). Specific staining was localized to the plasma membrane and cytoplasm. View our protocol for [Fluorescent ICC Staining of Non-adherent Cells](#).

PREPARATION AND STORAGE

Reconstitution	Reconstitute at 0.5 mg/mL in sterile PBS.
Shipping	The product is shipped at ambient temperature. Upon receipt, store it immediately at the temperature recommended below. *Small pack size (-SP) is shipped with polar packs. Upon receipt, store it immediately at -20 to -70 °C
Stability & Storage	Use a manual defrost freezer and avoid repeated freeze-thaw cycles. <ul style="list-style-type: none"> ● 12 months from date of receipt, -20 to -70 °C as supplied. ● 1 month, 2 to 8 °C under sterile conditions after reconstitution. ● 6 months, -20 to -70 °C under sterile conditions after reconstitution.

BACKGROUND

CD68, also called Scavenger Receptor D1 (SR-D1), is a type I transmembrane glycoprotein that belongs to the LAMP family of molecules. CD68 is expressed on monocytes and macrophages and serves as a scavenger receptor for oxidized LDL.