

DESCRIPTION

Species Reactivity	Human
Specificity	Detects human Prominin 2. Stains human Prominin 2-transfected cells but not irrelevant transfectants.
Source	Monoclonal Mouse IgG _{2B} Clone # 244029
Purification	Protein A or G purified from hybridoma culture supernatant
Immunogen	NS0 mouse myeloma cell line transfected with human Prominin 2 Ala27-Leu834 Accession # AAM10541
Formulation	Lyophilized from a 0.2 µm filtered solution in PBS with Trehalose. See Certificate of Analysis for details. *Small pack size (-SP) is supplied as a 0.2 µm filtered solution in PBS.

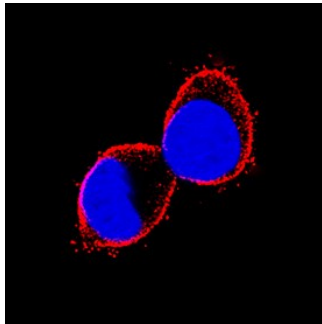
APPLICATIONS

Please Note: Optimal dilutions should be determined by each laboratory for each application. *General Protocols* are available in the *Technical Information* section on our website.

	Recommended Concentration	Sample
Flow Cytometry	2.5 µg/10 ⁶ cells	LNCaP human prostate cancer cell line
Immunocytochemistry	8-25 µg/mL	See Below
CyTOF-ready	Ready to be labeled using established conjugation methods. No BSA or other carrier proteins that could interfere with conjugation.	

DATA

Immunocytochemistry



Prominin 2 in HepG2 Human Cell Line.
Prominin 2 was detected in immersion fixed HepG2 human hepatocellular carcinoma cell line using Mouse Anti-Human Prominin 2 Monoclonal Antibody (Catalog # MAB2024) at 3 µg/mL for 3 hours at room temperature. Cells were stained using the NorthernLights™ 557-conjugated Anti-Mouse IgG Secondary Antibody (red; Catalog # NL007) and counterstained with DAPI (blue). Specific staining was localized to cell surfaces. View our protocol for [Fluorescent ICC Staining of Cells on Coverslips](#).

PREPARATION AND STORAGE

Reconstitution	Reconstitute at 0.5 mg/mL in sterile PBS.
Shipping	The product is shipped at ambient temperature. Upon receipt, store it immediately at the temperature recommended below. *Small pack size (-SP) is shipped with polar packs. Upon receipt, store it immediately at -20 to -70 °C
Stability & Storage	Use a manual defrost freezer and avoid repeated freeze-thaw cycles. <ul style="list-style-type: none"> ● 12 months from date of receipt, -20 to -70 °C as supplied. ● 1 month, 2 to 8 °C under sterile conditions after reconstitution. ● 6 months, -20 to -70 °C under sterile conditions after reconstitution.

BACKGROUND

Prominin 2 is a pentaspan membrane glycoprotein predominantly expressed in neuroepithelial cells, hematopoietic stem cells and epithelial cells of the adult kidney and digestive tract (1, 2). Prominin 2 is a 112-kDa glycoprotein structurally related to prominin 1 (CD133). The amino acid identity between prominin 1 and prominin 2 is low (<30%), but they exhibit some redundant functions.

References:

1. Fargeas, C.A. *et al.* (2003) *J. Biol. Chem.* **278**(10):8586.
2. Fargeas, C.A. *et al.* (2003) *Stem Cells* **21**(4):506.