

DESCRIPTION

Species Reactivity	Human
Specificity	Detects human IL-2 in direct ELISAs.
Source	Monoclonal Mouse IgG ₁ Clone # 5325
Purification	Protein A or G purified from cell culture supernatant
Immunogen	<i>E. coli</i> -derived recombinant human IL-2 Ala21-Thr153 Accession # NP_000577
Formulation	Lyophilized from a 0.2 µm filtered solution in PBS with Trehalose. See Certificate of Analysis for details. *Small pack size (-SP) is supplied either lyophilized or as a 0.2 µm filtered solution in PBS.

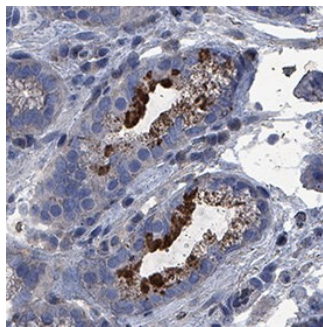
APPLICATIONS

Please Note: Optimal dilutions should be determined by each laboratory for each application. [General Protocols](#) are available in the Technical Information section on our website.

	Recommended Concentration	Sample
Immunohistochemistry	5-25 µg/mL	See Below

DATA

Immunohistochemistry



IL-2 in Human Stomach. IL-2 was detected in immersion fixed paraffin-embedded sections of human stomach using Mouse Anti-Human IL-2 Monoclonal Antibody (Catalog # MAB2022) at 5 µg/mL for 1 hour at room temperature followed by incubation with the Anti-Mouse IgG VisUCyte™ HRP Polymer Antibody (Catalog # VC001). Before incubation with the primary antibody, tissue was subjected to heat-induced epitope retrieval using Antigen Retrieval Reagent-Basic (Catalog # CTS013). Tissue was stained using DAB (brown) and counterstained with hematoxylin (blue). Specific staining was localized to intestinal glands. View our protocol for [IHC Staining with VisUCyte HRP Polymer Detection Reagents](#).

PREPARATION AND STORAGE

Reconstitution	Reconstitute at 0.5 mg/mL in sterile PBS.
Shipping	The product is shipped at ambient temperature. Upon receipt, store it immediately at the temperature recommended below. *Small pack size (-SP) is shipped with polar packs. Upon receipt, store it immediately at -20 to -70 °C
Stability & Storage	Use a manual defrost freezer and avoid repeated freeze-thaw cycles. <ul style="list-style-type: none"> • 12 months from date of receipt, -20 to -70 °C as supplied. • 1 month, 2 to 8 °C under sterile conditions after reconstitution. • 6 months, -20 to -70 °C under sterile conditions after reconstitution.

BACKGROUND

Interleukin 2 (IL-2) is a cytokine that stimulates the growth and differentiation of B cells, T cells, NK cells, and monocyte/macrophages. It functions through the heterotrimeric IL-2 receptor comprising α, β, and γ chains.